

## MTG2 RABBIT PAB

**Cat.#:** S213124

**Product Name:** Anti-MTG2 Rabbit Polyclonal Antibody

**Synonyms:** ObgHI; GTPBP5; dJ1005F21.2

**UNIPROT ID:** Q9H4K7 (Gene Accession - BC036716 )

**Background:** Small G proteins, such as GTPBP5, act as molecular switches that play crucial roles in the regulation of fundamental cellular processes such as protein synthesis, nuclear transport, membrane trafficking, and signal transduction (Hirano et al., 2006 [PubMed 17054726]).

**Immunogen:** Fusion protein of human MTG2

**Applications:** ELISA, WB, IHC

**Recommended Dilutions:** IHC: 150-300;WB: 1000-5000;ELISA: 5000-10000

**Host Species:** Rabbit

**Clonality:** Rabbit Polyclonal

**Isotype:** Immunogen-specific rabbit IgG

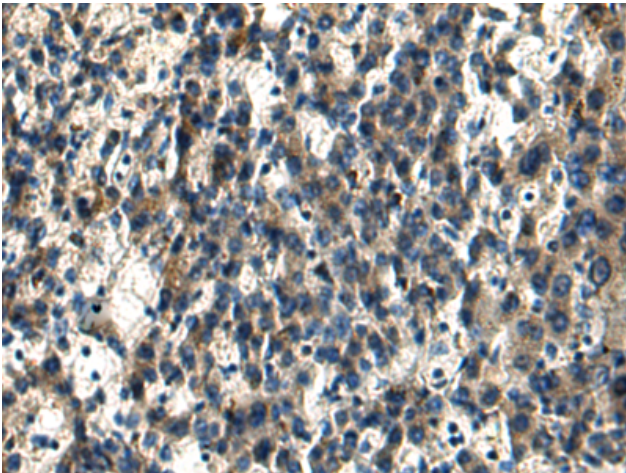
**Purification:** Antigen affinity purification

**Species Reactivity:** Human

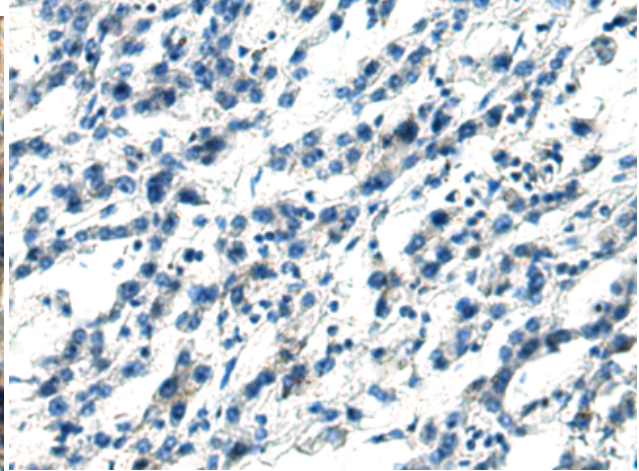
**Constituents:** PBS (without Mg<sup>2+</sup> and Ca<sup>2+</sup>), pH 7.4, 150 mM NaCl, 0.05% Sodium Azide and 40% glycerol

**Research Areas:** Signal Transduction

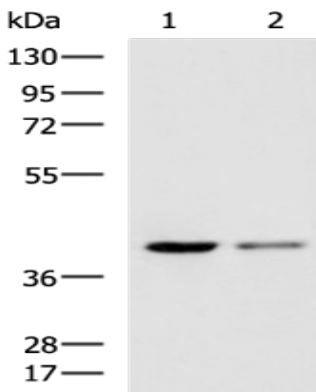
**Storage & Shipping:** Store at -20°C. Avoid repeated freezing and thawing



Immunohistochemistry analysis of paraffin embedded Human liver cancer tissue using 213124(MTG2 Antibody) at a dilution of 1/160(Cytoplasm).



In comparison with the IHC on the left, the same paraffin-embedded Human liver cancer tissue is first treated with the fusion protein and then with 213124(Anti-MTG2 Antibody) at dilution 1/160.



Gel: 8%SDS-PAGE, Lysate: 40  $\mu$ g;  
 Lane 1-2: PC3 and Hela cell lysates;  
 Primary antibody: 213124(MTG2 Antibody) at dilution 1/1000;  
 Secondary antibody: HRP-conjugated Goat anti rabbit IgG at 1/5000 dilution;  
 Exposure time: 1 minute