

MTHFD2L RABBIT PAB

Cat.#: S218965

Product Name: Anti-MTHFD2L Rabbit Polyclonal Antibody

Synonyms:

UNIPROT ID: Q9H903 (Gene Accession - BC032771)

Background: The specific function of this protein remains unknown.

Immunogen: Fusion protein of human MTHFD2L

Applications: ELISA, IHC

Recommended Dilutions: IHC: 30-150; ELISA: 5000-10000

Host Species: Rabbit

Clonality: Rabbit Polyclonal

Isotype: Immunogen-specific rabbit IgG

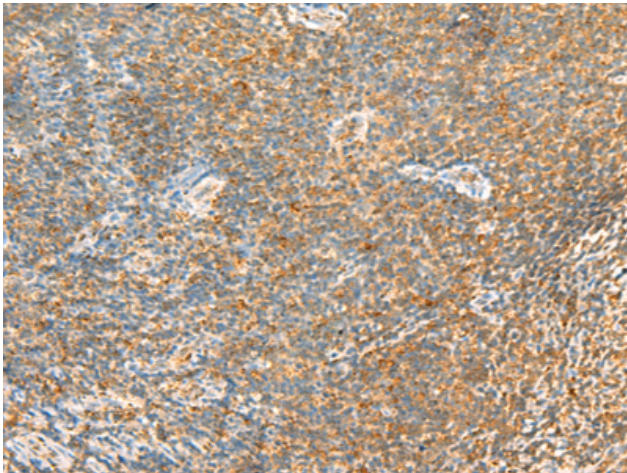
Purification: Antigen affinity purification

Species Reactivity: Human, Mouse, Rat

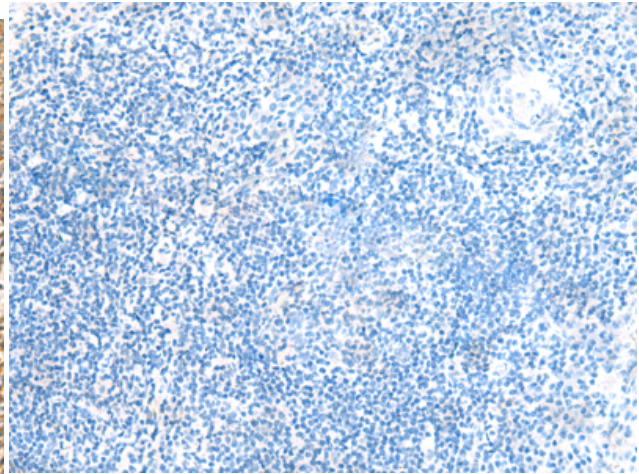
Constituents: PBS (without Mg²⁺ and Ca²⁺), pH 7.4, 150 mM NaCl, 0.05% Sodium Azide and 40% glycerol

Research Areas: Metabolism

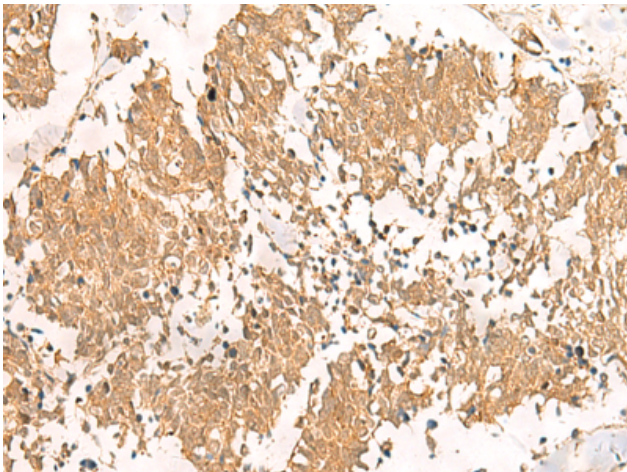
Storage & Shipping: Store at -20°C. Avoid repeated freezing and thawing



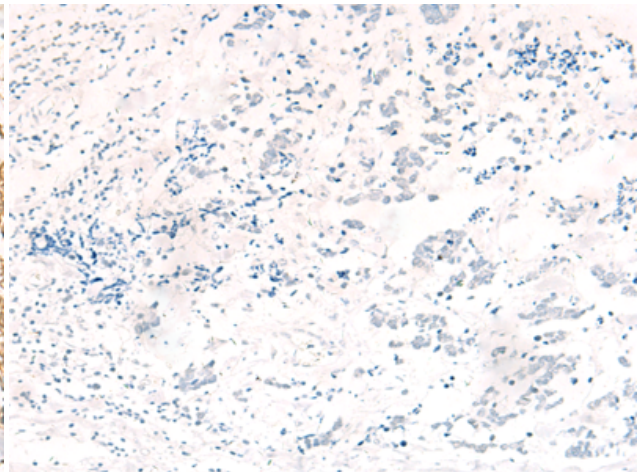
Immunohistochemistry analysis of paraffin embedded Human tonsil tissue using 218965(MTHFD2L Antibody) at a dilution of 1/30(Cytoplasm or Nucleus).



In comparison with the IHC on the left, the same paraffin-embedded Human tonsil tissue is first treated with the fusion protein and then with 218965(Anti-MTHFD2L Antibody) at dilution 1/30.



The image on the left is immunohistochemistry of paraffin-embedded Human lung cancer tissue using 218965(Anti-MTHFD2L Antibody) at a dilution of 1/30.



In comparison with the IHC on the left, the same paraffin-embedded Human lung cancer tissue is first treated with fusion protein and then with D225580(Anti-MTHFD2L Antibody) at dilution 1/30.