

## MTHFR RABBIT MAB

**Cat.#:** N262547

**Product Name:** Anti-MTHFR Rabbit Monoclonal Antibody

**Synonyms:** MTHFR; Methylenetetrahydrofolate reductase

**UNIPROT ID:** P42898

**Background:** The protein encoded by this gene catalyzes the conversion of 5,10-methylenetetrahydrofolate to 5-methyltetrahydrofolate, a co-substrate for homocysteine remethylation to methionine. Genetic variation in this gene influences susceptibility to occlusive vascular disease, neural tube defects, colon cancer and acute leukemia, and mutations in this gene are associated with methylenetetrahydrofolate reductase deficiency.

**Immunogen:** Recombinant protein of human MTHFR

**Applications:** WB,ICC/IF,IP

**Recommended Dilutions:** WB: 1/500-1/1000 IF: 1/50-1/200 IP: 1/20

**Host Species:** Rabbit

**Clonality:** Rabbit Monoclonal

**Clone ID:** R02-6H3

**MW:** Calculated MW: 75 kDa; Observed MW: 75 kDa

**Isotype:** IgG

**Purification:** Affinity Purified

**Species Reactivity:** Human,Mouse

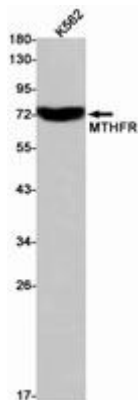
**Conjugation:** Unconjugated

**Modification:** Unmodified

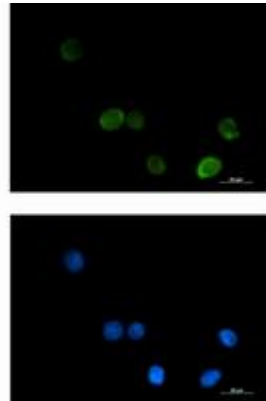
**Constituents:** PBS (without Mg<sup>2+</sup> and Ca<sup>2+</sup>), pH 7.3 containing 50% glycerol, 0.5% BSA and 0.02% sodium azide

**Research Areas:** Signal Transduction

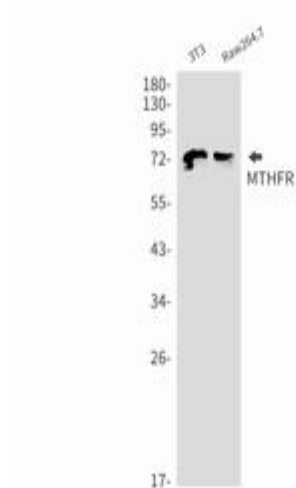
**Storage & Shipping:** Store at -20°C. Avoid repeated freezing and thawing



Western blot analysis of MTHFR in K562 lysates using MTHFR antibody



Immunocytochemistry analysis of MTHFR (green) in K562 using MTHFR antibody, and DAPI (blue).



Western blot analysis of MTHFR in 3T3, Raw264.7 lysates using MTHFR antibody.