

## MTMR6 RABBIT PAB

**Cat.#:** S219577

**Product Name:** Anti-MTMR6 Rabbit Polyclonal Antibody

**Synonyms:**

**UNIPROT ID:** Q9Y217 (Gene Accession - BC040012 )

**Background:** Enables phosphatidylinositol-3,5-bisphosphate phosphatase activity and phosphatidylinositol-3-phosphatase activity. Involved in phosphatidylinositol dephosphorylation. Located in cytoplasm and nuclear envelope.

**Immunogen:** Fusion protein of human MTMR6

**Applications:** ELISA, IHC

**Recommended Dilutions:** IHC: 50-200; ELISA: 5000-10000

**Host Species:** Rabbit

**Clonality:** Rabbit Polyclonal

**Isotype:** Immunogen-specific rabbit IgG

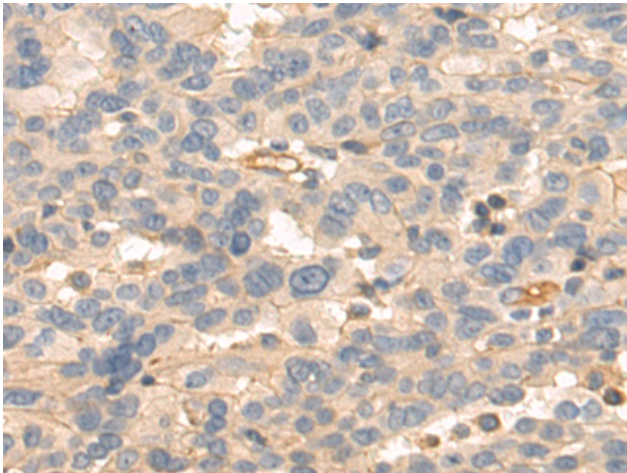
**Purification:** Antigen affinity purification

**Species Reactivity:** Human, Mouse, Rat

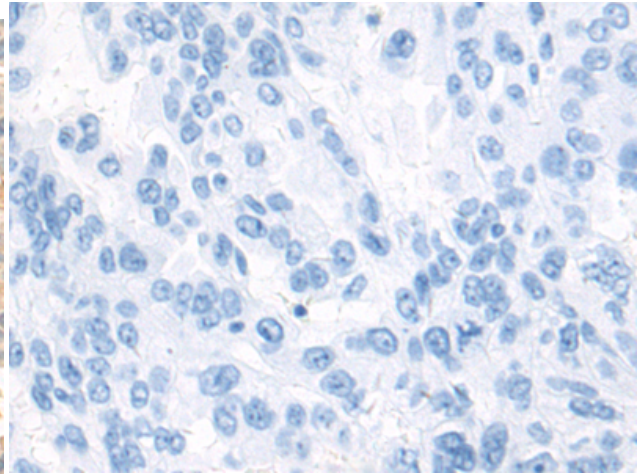
**Constituents:** PBS (without Mg<sup>2+</sup> and Ca<sup>2+</sup>), pH 7.4, 150 mM NaCl, 0.05% Sodium Azide and 40% glycerol

**Research Areas:** Signal Transduction

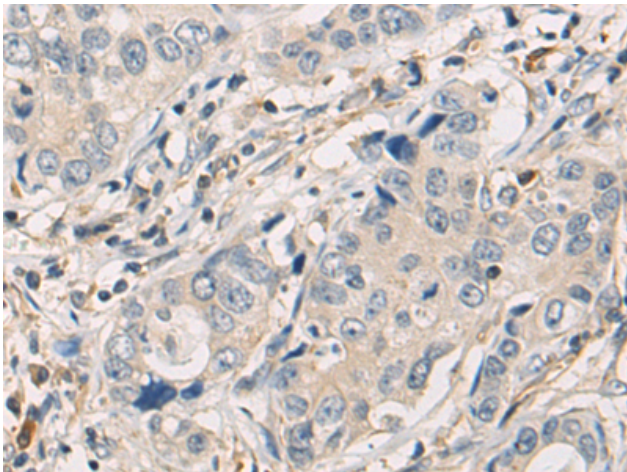
**Storage & Shipping:** Store at -20°C. Avoid repeated freezing and thawing



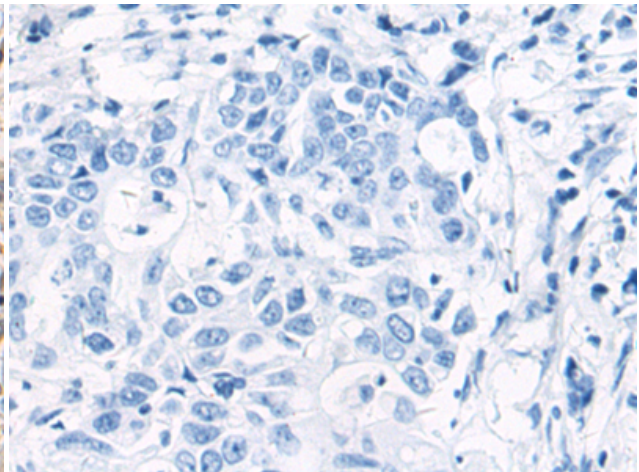
Immunohistochemistry analysis of paraffin embedded Human breast cancer tissue using 219577(MTMR6 Antibody) at a dilution of 1/70(Cytoplasm).



In comparison with the IHC on the left, the same paraffin-embedded Human breast cancer tissue is first treated with the fusion protein and then with 219577(Anti-MTMR6 Antibody) at dilution 1/70.



The image on the left is immunohistochemistry of paraffin-embedded Human gastric cancer tissue using 219577(Anti-MTMR6 Antibody) at a dilution of 1/70.



In comparison with the IHC on the left, the same paraffin-embedded Human gastric cancer tissue is first treated with fusion protein and then with D227826(Anti-MTMR6 Antibody) at dilution 1/70.