

MTTFA RABBIT MAB

Cat.#: N261587

Product Name: Anti-mtTFA Rabbit Monoclonal Antibody

Synonyms: MtTF1; mtTFA; TCF6; TCF6L1; TCF6L2; TCF6L3; TFAM; Transcription factor 6

UNIPROT ID: Q00059

Background: Binds to the mitochondrial light strand promoter and functions in mitochondrial transcription regulation. Required for accurate and efficient promoter recognition by the mitochondrial RNA polymerase.

Immunogen: A synthetic peptide of human mtTFA

Applications: WB,IHC-F,IHC-P,ICC/IF,IP

Recommended Dilutions: WB: 1/500-1/1000 IHC: 1/50-1/100 IF: 1/50-1/200 IP: 1/20

Host Species: Rabbit

Clonality: Rabbit Monoclonal

Clone ID: R08-3E2

MW: Calculated MW: 29 kDa; Observed MW: 24 kDa

Isotype: IgG

Purification: Affinity Purified

Species Reactivity: Human

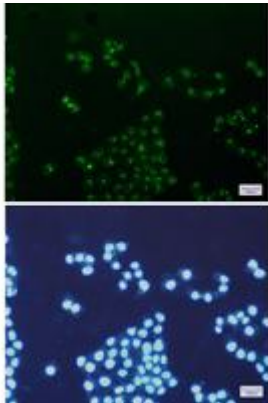
Conjugation: Unconjugated

Modification: Unmodified

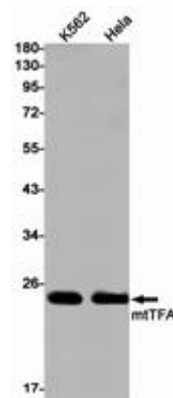
Constituents: PBS (without Mg²⁺ and Ca²⁺), pH 7.3 containing 50% glycerol, 0.5% BSA and 0.02% sodium azide

Research Areas: Tags & Cell Markers

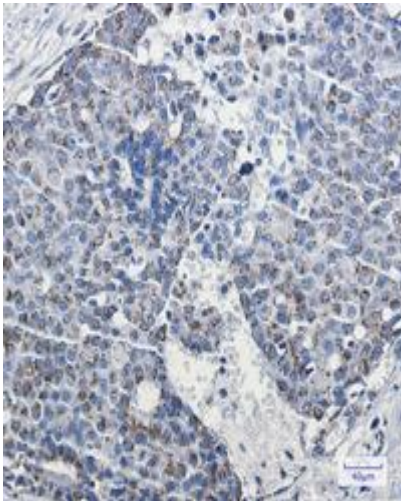
Storage & Shipping: Store at -20°C. Avoid repeated freezing and thawing



Immunocytochemistry analysis of mtTFA/TFAM (green) in HeLa using mtTFA/TFAM antibody, and DAPI (blue)



Western blot analysis of mtTFA in K562, HeLa lysates using mtTFA antibody.



Immunohistochemistry analysis of paraffin-embedded Human breast cancer using mtTFA antibody. High-pressure and temperature Sodium Citrate pH 6.0 was used for antigen retrieval.