

MUC5B RABBIT PAB

Cat.#: S220127

Product Name: Anti-MUC5B Rabbit Polyclonal Antibody

Synonyms: MG1; MUC5; MUC9; MUC-5B

UNIPROT ID: Q9HC84 (Gene Accession - NP_002449)

Background: This gene encodes a member of the mucin family of proteins, which are highly glycosylated macromolecular components of mucus secretions. This family member is the major gel-forming mucin in mucus. It is a major contributor to the lubricating and viscoelastic properties of whole saliva, normal lung mucus and cervical mucus. This gene has been found to be up-regulated in some human diseases, including sinus mucosa of chronic rhinosinusitis (CRS), CRS with nasal polyposis, chronic obstructive pulmonary disease (COPD) and H. pylori-associated gastric disease, and it may be involved in the pathogenesis of these diseases.

Immunogen: Synthetic peptide of human MUC5B

Applications: ELISA, WB, IHC

Recommended Dilutions: IHC: 50-100;WB: 200-1000;ELISA: 5000-10000

Host Species: Rabbit

Clonality: Rabbit Polyclonal

Isotype: Immunogen-specific rabbit IgG

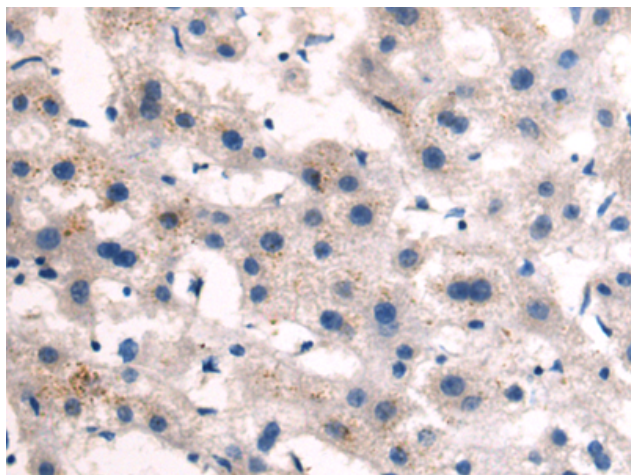
Purification: Antigen affinity purification

Species Reactivity: Human

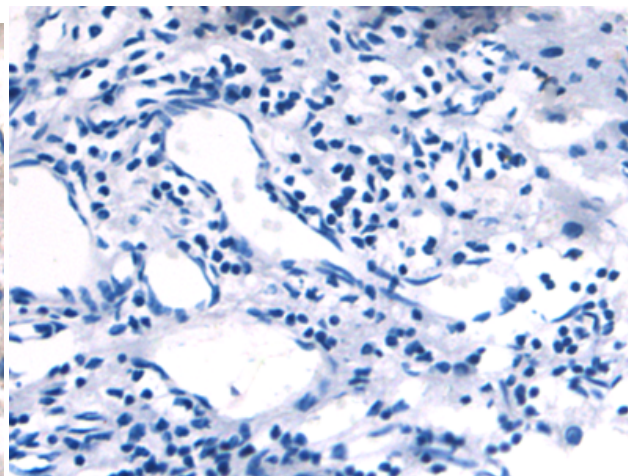
Constituents: PBS (without Mg²⁺ and Ca²⁺), pH 7.4, 150 mM NaCl, 0.05% Sodium Azide and 40% glycerol

Research Areas: Signal Transduction, Cell Biology

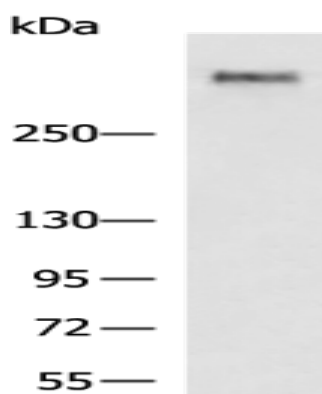
Storage & Shipping: Store at -20°C. Avoid repeated freezing and thawing



Immunohistochemistry analysis of paraffin embedded Human liver cancer tissue using 220127(MUC5B Antibody) at a dilution of 1/50(Secreted).



In comparison with the IHC on the left, the same paraffin-embedded Human liver cancer tissue is first treated with the synthetic peptide and then with 220127(Anti-MUC5B Antibody) at dilution 1/50.



Gel: 6%SDS-PAGE, Lysate: 40 μ g;
Lane: LOVO cell lysate;
Primary antibody: 220127(MUC5B Antibody) at dilution 1/500;
Secondary antibody: HRP-conjugated Goat anti rabbit IgG at 1/5000 dilution;
Exposure time: 3 minutes