

MUC6 RABBIT PAB

Cat.#: S220125

Product Name: Anti-MUC6 Rabbit Polyclonal Antibody

Synonyms: MUC-6

UNIPROT ID: Q6W4X9 (Gene Accession - NP_005952)

Background: The MUC6 gene encodes gastric mucin, a secreted glycoprotein that plays an essential role in epithelial cytoprotection from acid, proteases, pathogenic microorganisms, and mechanical trauma in the gastrointestinal tract. May provide a mechanism for modulation of the composition of the protective mucus layer related to acid secretion or the presence of bacteria and noxious agents in the lumen. Plays an important role in the cytoprotection of epithelial surfaces and are used as tumor markers in a variety of cancers. May play a role in epithelial organogenesis.

Immunogen: Synthetic peptide of human MUC6

Applications: ELISA, IHC

Recommended Dilutions: IHC: 25-100; ELISA: 1000-5000

Host Species: Rabbit

Clonality: Rabbit Polyclonal

Isotype: Immunogen-specific rabbit IgG

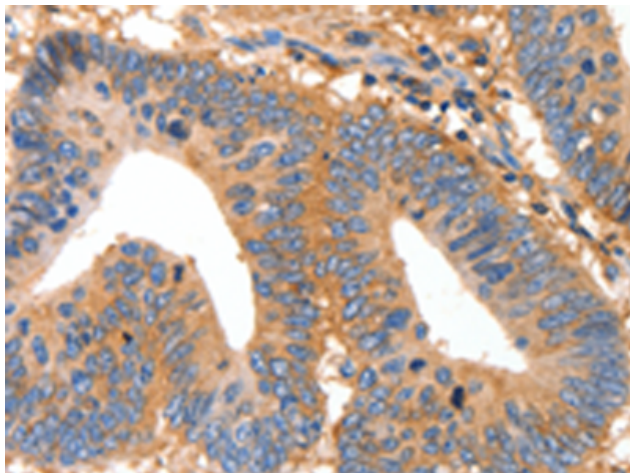
Purification: Antigen affinity purification

Species Reactivity: Human

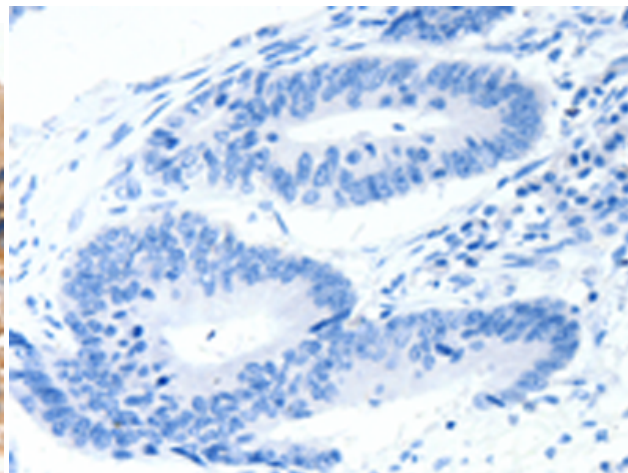
Constituents: PBS (without Mg²⁺ and Ca²⁺), pH 7.4, 150 mM NaCl, 0.05% Sodium Azide and 40% glycerol

Research Areas: Signal Transduction

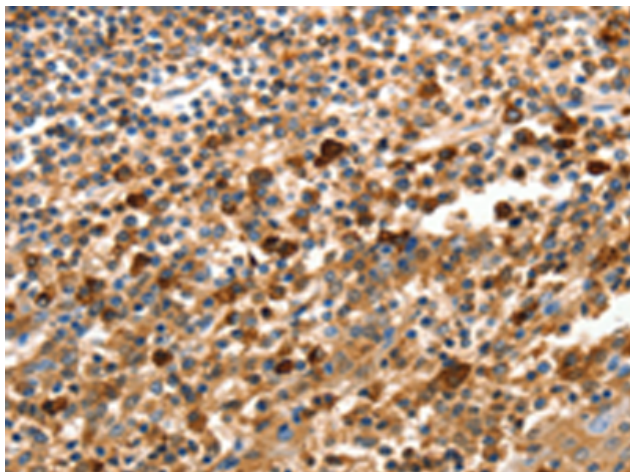
Storage & Shipping: Store at -20°C. Avoid repeated freezing and thawing



Immunohistochemistry analysis of paraffin embedded Human colon cancer tissue using 220125(MUC6 Antibody) at a dilution of 1/25(Cytoplasm).



In comparison with the IHC on the left, the same paraffin-embedded Human colon cancer tissue is first treated with the synthetic peptide and then with 220125(Anti-MUC6 Antibody) at dilution 1/25.



The image on the left is immunohistochemistry of paraffin-embedded Human tonsil tissue using 220125(Anti-MUC6 Antibody) at a dilution of 1/25.



In comparison with the IHC on the left, the same paraffin-embedded Human tonsil tissue is first treated with synthetic peptide and then with D261001(Anti-MUC6 Antibody) at dilution 1/25.