

## MYCN RABBIT PAB

**Cat.#:** S214530

**Product Name:** Anti-MYCN Rabbit Polyclonal Antibody

**Synonyms:** NMYC; ODED; MODED; N-myc; bHLHe37

**UNIPROT ID:** P04198 (Gene Accession - NP\_005369 )

**Background:** This gene is a member of the MYC family and encodes a protein with a basic helix-loop-helix (bHLH) domain. This protein is located in the nucleus and must dimerize with another bHLH protein in order to bind DNA. Amplification of this gene is associated with a variety of tumors, most notably neuroblastomas. Multiple alternatively spliced transcript variants encoding different isoforms have been found for this gene.

**Immunogen:** Synthetic peptide of human MYCN

**Applications:** ELISA, WB, IHC

**Recommended Dilutions:** IHC: 50-100;WB: 200-1000;ELISA: 5000-10000

**Host Species:** Rabbit

**Clonality:** Rabbit Polyclonal

**Isotype:** Immunogen-specific rabbit IgG

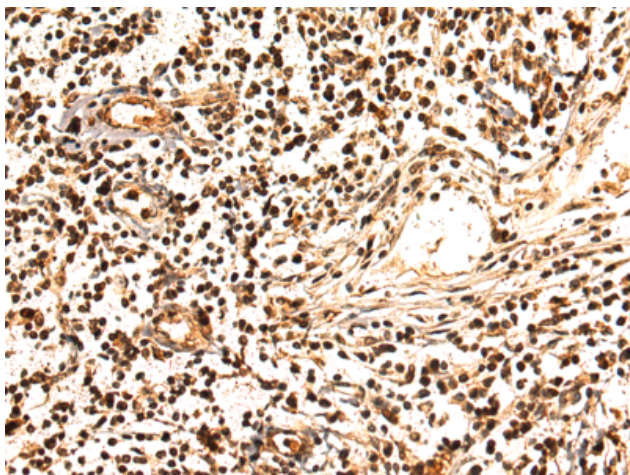
**Purification:** Antigen affinity purification

**Species Reactivity:** Human, Mouse, Rat

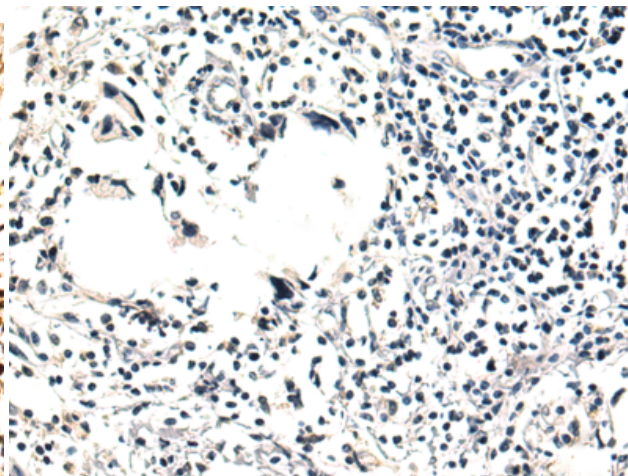
**Constituents:** PBS (without Mg<sup>2+</sup> and Ca<sup>2+</sup>), pH 7.4, 150 mM NaCl, 0.05% Sodium Azide and 40% glycerol

**Research Areas:** Epigenetics and Nuclear Signaling, Cancer

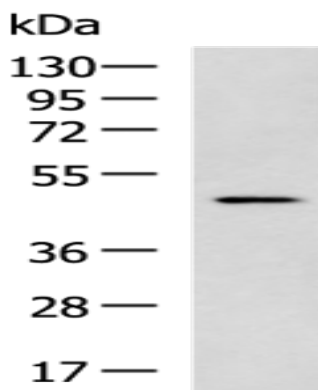
**Storage & Shipping:** Store at -20°C. Avoid repeated freezing and thawing



Immunohistochemistry analysis of paraffin embedded Human breast cancer tissue using 214530(MYCN Antibody) at a dilution of 1/20(Nucleus).



In comparison with the IHC on the left, the same paraffin-embedded Human breast cancer tissue is first treated with the synthetic peptide and then with 214530(Anti-MYCN Antibody) at dilution 1/20.



Gel: 8%SDS-PAGE, Lysate: 40  $\mu$ g;  
Lane: 293T cell lysate;  
Primary antibody: 214530(MYCN Antibody) at dilution 1/600;  
Secondary antibody: HRP-conjugated Goat anti rabbit IgG at 1/5000 dilution;  
Exposure time: 2 minutes