

## MYDGF RABBIT PAB

**Cat.#:** S215728

**Product Name:** Anti-MYDGF Rabbit Polyclonal Antibody

**Synonyms:** IL25; IL27; SF20; IL27w; C19orf10; R33729\_1; EUROIMAGE1875335

**UNIPROT ID:** Q969H8 (Gene Accession - NP\_061980 )

**Background:** The protein encoded by this gene was previously thought to support proliferation of lymphoid cells and was considered an interleukin. However, this activity has not been reproducible and the function of this protein is currently unknown.

**Immunogen:** Synthetic peptide of human MYDGF

**Applications:** ELISA, WB, IHC

**Recommended Dilutions:** IHC: 30-150;WB: 500-2000;ELISA: 5000-10000

**Host Species:** Rabbit

**Clonality:** Rabbit Polyclonal

**Isotype:** Immunogen-specific rabbit IgG

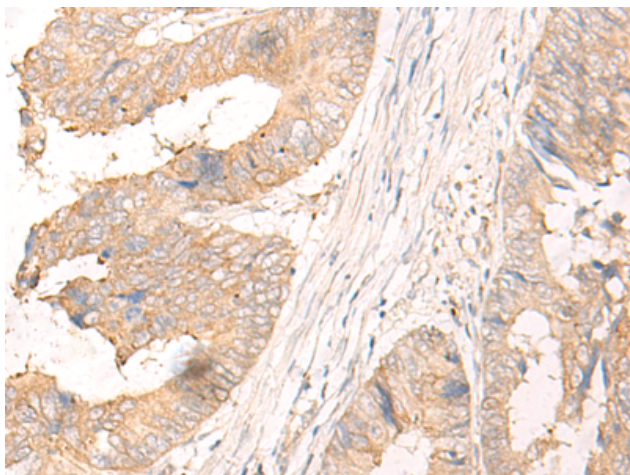
**Purification:** Antigen affinity purification

**Species Reactivity:** Human, Mouse

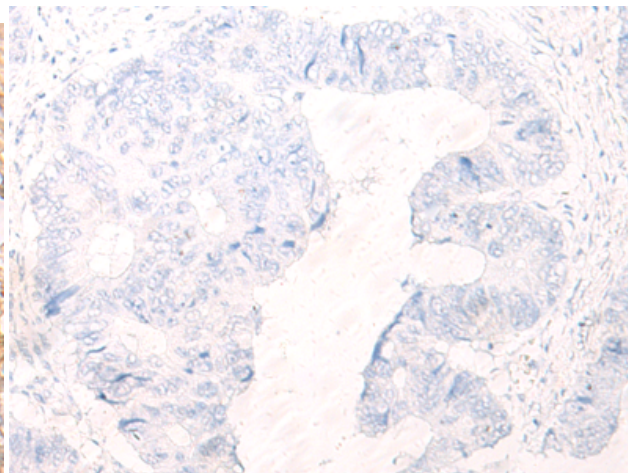
**Constituents:** PBS (without Mg<sup>2+</sup> and Ca<sup>2+</sup>), pH 7.4, 150 mM NaCl, 0.05% Sodium Azide and 40% glycerol

**Research Areas:** Cell Biology

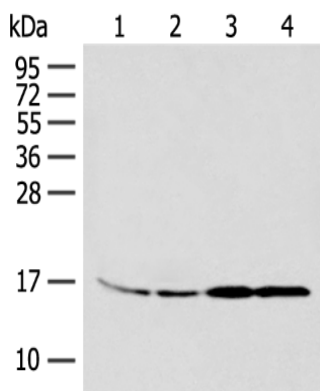
**Storage & Shipping:** Store at -20°C. Avoid repeated freezing and thawing



Immunohistochemistry analysis of paraffin embedded Human colorectal cancer tissue using 215728(MYDGF Antibody) at a dilution of 1/25(Cytoplasm).



In comparison with the IHC on the left, the same paraffin-embedded Human colorectal cancer tissue is first treated with the synthetic peptide and then with 215728(Anti-MYDGF Antibody) at dilution 1/25.



Gel: 12%SDS-PAGE, Lysate: 40 µg;  
 Lane 1-4: 293T and K562 cell, Human between peritoneal stromal sarcoma tissue, HEPG2 cell lysates;  
 Primary antibody: 215728(MYDGF Antibody) at dilution 1/250;  
 Secondary antibody: Goat anti rabbit IgG at 1/8000 dilution;  
 Exposure time: 6 minutes