

## MYF5 RABBIT PAB

**Cat.#:** S213661

**Product Name:** Anti-MYF5 Rabbit Polyclonal Antibody

**Synonyms:** bHLHc2

**UNIPROT ID:** P13349 (Gene Accession - NP\_005584 )

**Background:** Myogenic factor 5 is a protein that in humans is encoded by the MYF5 gene. It is a protein with a key role in regulating muscle differentiation or myogenesis. Without Myf5 and MyoD, myogenic cells will fail to progress normally during the determination stage of myogenesis. Myf5 belongs to a family of proteins known as myogenic regulatory factors (MRFs). These bHLH (basic helix loop helix) transcription factors act sequentially in myogenic differentiation. MRF family members include Myf5, MyoD (Myf3), myogenin, and MRF4 (Myf6).

**Immunogen:** Synthetic peptide of human MYF5

**Applications:** ELISA, IHC

**Recommended Dilutions:** IHC: 25-100; ELISA: 1000-2000

**Host Species:** Rabbit

**Clonality:** Rabbit Polyclonal

**Isotype:** Immunogen-specific rabbit IgG

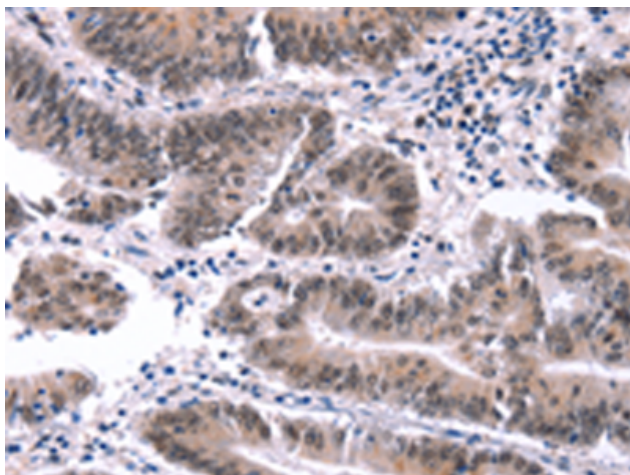
**Purification:** Antigen affinity purification

**Species Reactivity:** Human, Mouse

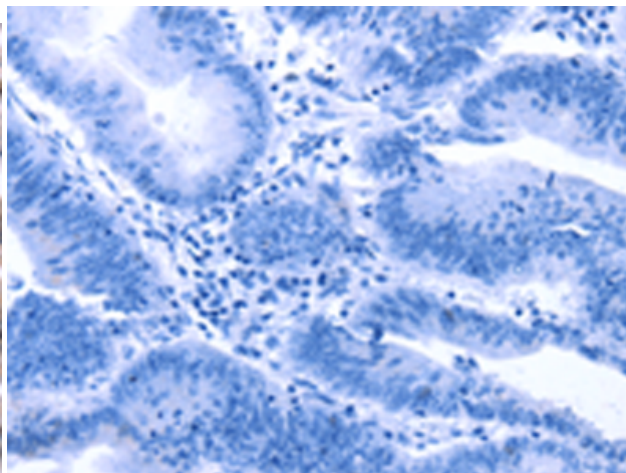
**Constituents:** PBS (without Mg<sup>2+</sup> and Ca<sup>2+</sup>), pH 7.4, 150 mM NaCl, 0.05% Sodium Azide and 40% glycerol

**Research Areas:** Epigenetics and Nuclear Signaling, Stem Cells, Developmental Biology

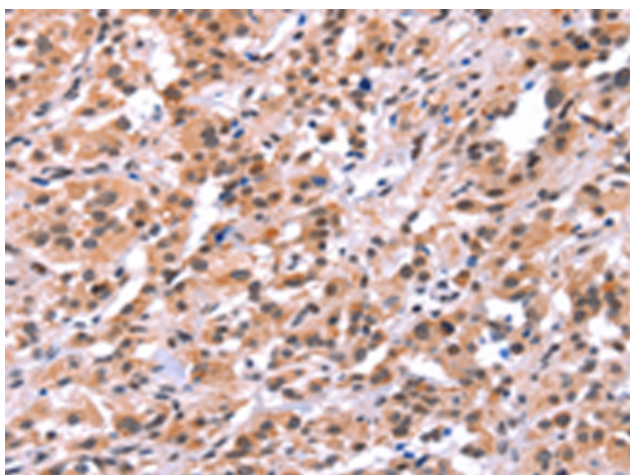
**Storage & Shipping:** Store at -20°C. Avoid repeated freezing and thawing



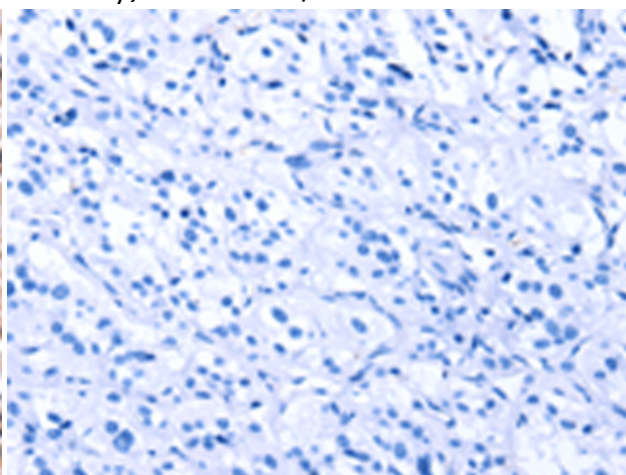
Immunohistochemistry analysis of paraffin embedded Human colon cancer tissue using 213661(MYF5 Antibody) at a dilution of 1/15(Nucleus).



In comparison with the IHC on the left, the same paraffin-embedded Human colon cancer tissue is first treated with the synthetic peptide and then with 213661(Anti-MYF5 Antibody) at dilution 1/15.



The image on the left is immunohistochemistry of paraffin-embedded Human thyroid cancer tissue using 213661(Anti-MYF5 Antibody) at a dilution of 1/15.



In comparison with the IHC on the left, the same paraffin-embedded Human thyroid cancer tissue is first treated with synthetic peptide and then with D160620(Anti-MYF5 Antibody) at dilution 1/15.