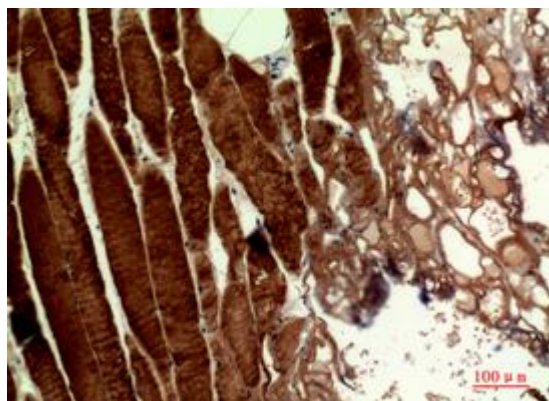
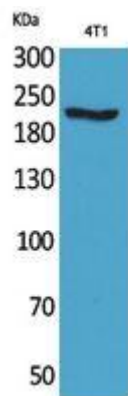


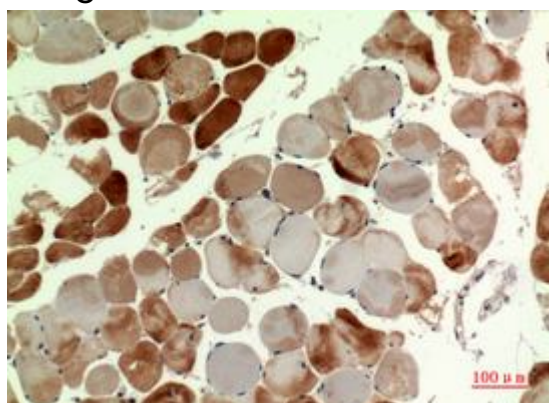
MYH RABBIT PAB**Cat.#:** N225017**Product Name:** Anti-MYH Rabbit pAb**Synonyms:** MYH1; Myosin-1; Myosin heavy chain 1; Myosin heavy chain 2x; MyHC-2x; Myosin heavy chain IIx/d; MyHC-IIx/d; Myosin heavy chain; skeletal muscle; adult 1; MYH2; MYHSA2; Myosin-2; Myosin heavy chain 2Myosin heavy chain 2; Myosin heavy chain 2a; MyHC-2a; Myosin heavy chain IIa; MyHC-IIa; Myosin heavy chain; skeletal muscle; adult 2; MYH3; Myosin-3; Muscle embryonic myosin heavy chain; Myosin heavy chain 3**UNIPROT ID:** P12882/Q9UKX2/P11055/Q9Y623/P13533/P12883/P13535**Background:** Muscle contraction.**Immunogen:** The antiserum was produced against synthesized peptide derived from human MYH-pan around the non-acetylation site of Lys1394. AA range:1351-1400**Applications:** WB,IHC-P,ELISA**Recommended Dilutions:** WB: 1/500-1/1000 IHC: 1/50-1/100 ELISA: 1/10000**Host Species:** Rabbit**Clonality:** Rabbit Polyclonal**Clone ID:** -**MW:** Calculated MW: 223 kDa; Observed MW: 223 kDa**Isotype:** IgG**Purification:** Affinity Purified**Species Reactivity:** Human,Mouse,Rat**Conjugation:** Unconjugated**Modification:** Unmodified**Constituents:** PBS (without Mg²⁺ and Ca²⁺), pH 7.3 containing 50% glycerol, 0.5% BSA and 0.02% sodium azide**Research Areas:** Signal Transduction**Storage & Shipping:** Store at -20°C. Avoid repeated freezing and thawing



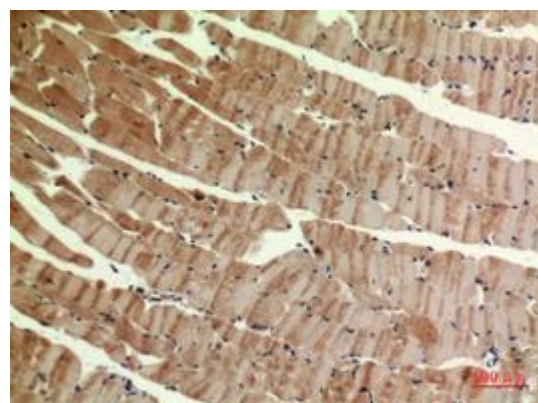
Immunohistochemistry analysis of paraffin-embedded Human muscle using MYH antibody. High-pressure and temperature Sodium Citrate pH 6.0 was used for antigen retrieval.



Western blot analysis of MYH pAb in 4T1 lysates using MYH antibody.



Immunohistochemistry analysis of paraffin-embedded Human muscle using MYH antibody. High-pressure and temperature Sodium Citrate pH 6.0 was used for antigen retrieval.



Immunohistochemistry analysis of paraffin-embedded mouse muscle using MYH antibody. High-pressure and temperature Sodium Citrate pH 6.0 was used for antigen retrieval.