

MYL12B RABBIT PAB

Cat.#: S221530

Product Name: Anti-MYL12B Rabbit Polyclonal Antibody

Synonyms: MLC-B; MRLC2

UNIPROT ID: O14950 (Gene Accession - NP_291024)

Background: The activity of nonmuscle myosin II is regulated by phosphorylation of a regulatory light chain, such as MRLC2. This phosphorylation results in higher MgATPase activity and the assembly of myosin II filaments.

Immunogen: Synthetic peptide of human MYL12B

Applications: ELISA, WB, IHC

Recommended Dilutions: IHC: 50-100;WB: 500-2000;ELISA: 2000-5000

Host Species: Rabbit

Clonality: Rabbit Polyclonal

Isotype: Immunogen-specific rabbit IgG

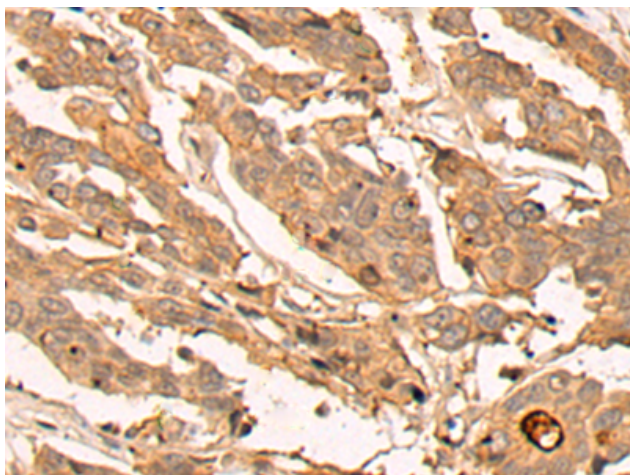
Purification: Antigen affinity purification

Species Reactivity: Human, Mouse, Rat

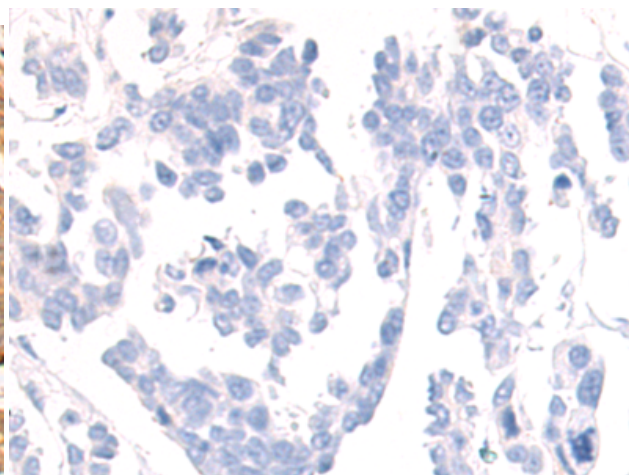
Constituents: PBS (without Mg²⁺ and Ca²⁺), pH 7.4, 150 mM NaCl, 0.05% Sodium Azide and 40% glycerol

Research Areas: Signal Transduction

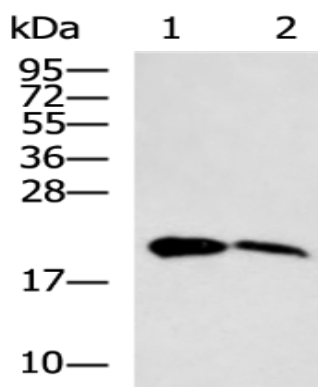
Storage & Shipping: Store at -20°C. Avoid repeated freezing and thawing



Immunohistochemistry analysis of paraffin embedded Human colorectal cancer tissue using 221530 (MYL12B Antibody) at a dilution of 1/25 (Cytoplasm).



In comparison with the IHC on the left, the same paraffin-embedded Human colorectal cancer tissue is first treated with the synthetic peptide and then with 221530 (Anti-MYL12B Antibody) at dilution 1/25.



Gel: 12%SDS-PAGE, Lysate: 40 µg;
Lane 1-2: Human urinary bladder tissue,
Mouse urinary bladder tissue lysates;
Primary antibody: 221530 (MYL12B Antibody) at
dilution 1/500;
Secondary antibody: HRP-conjugated Goat
anti rabbit IgG at 1/5000 dilution;
Exposure time: 1 minute