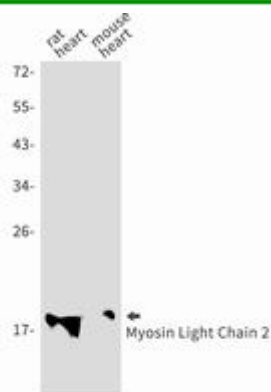


**MYL2 RABBIT MAB****Cat.#:** N262566**Product Name:** Anti-MYL2 Rabbit Monoclonal Antibody**Synonyms:** Myosin regulatory light chain 2; ventricular/cardiac muscle isoform; MLC-2; MLC-2v**UNIPROT ID:** P10916**Background:** Myosin is composed of six polypeptide chains: two identical heavy chains and two pairs of light chains. Myosin light chain 2 (MLC2), also known as myosin regulatory light chain (MRLC), RLC, or LC20, has many isoforms depending on its distribution. In smooth muscle, MLC2 is phosphorylated at Thr18 and Ser19 by myosin light chain kinase (MLCK) in a  $\text{Ca}^{2+}$ /calmodulin-dependent manner.**Immunogen:** A synthetic peptide of human Myosin Light Chain 2**Applications:** WB,IHC-P,IP**Recommended Dilutions:** WB: 1/500-1/1000 IHC: 1/50-1/100 IP: 1/20**Host Species:** Rabbit**Clonality:** Rabbit Monoclonal**Clone ID:** R07-7C5**MW:** Calculated MW: 19 kDa; Observed MW: 19 kDa**Isotype:** IgG**Purification:** Affinity Purified**Species Reactivity:** Mouse,Rat**Conjugation:** Unconjugated**Modification:** Unmodified**Constituents:** PBS (without  $\text{Mg}^{2+}$  and  $\text{Ca}^{2+}$ ), pH 7.3 containing 50% glycerol, 0.5% BSA and 0.02% sodium azide**Research Areas:** Signal Transduction**Storage & Shipping:** Store at  $-20^{\circ}\text{C}$ . Avoid repeated freezing and thawing



Western blot analysis of Myosin Light Chain 2 in rat heart, mouse heart lysates using MYL2 antibody.