

MYL9 RABBIT PAB

Cat.#: S219930

Product Name: Anti-MYL9 Rabbit Polyclonal Antibody

Synonyms: LC20, MLC2, MRLC1, MYRL2, MLC-2C

UNIPROT ID: P24844 (Gene Accession - NP_006088)

Background: Myosin, a structural component of muscle, consists of two heavy chains and four light chains. The protein encoded by this gene is a myosin light chain that may regulate muscle contraction by modulating the ATPase activity of myosin heads. The encoded protein binds calcium and is activated by myosin light chain kinase. Two transcript variants encoding different isoforms have been found for this gene.

Immunogen: Synthetic peptide of human MYL9

Applications: ELISA, WB, IHC

Recommended Dilutions: IHC: 50-200;WB: 1000-5000;ELISA: 2000-10000

Host Species: Rabbit

Clonality: Rabbit Polyclonal

Isotype: Immunogen-specific rabbit IgG

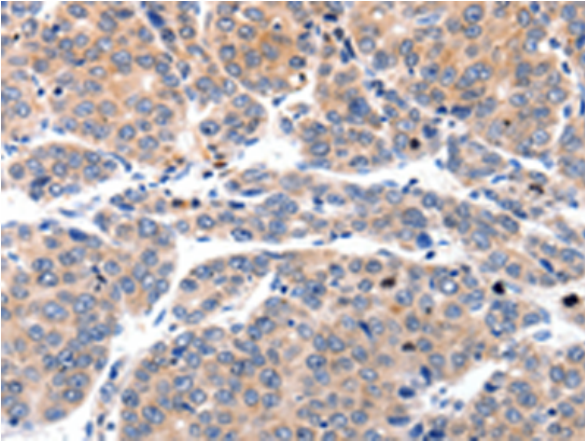
Purification: Antigen affinity purification

Species Reactivity: Human, Mouse, Rat

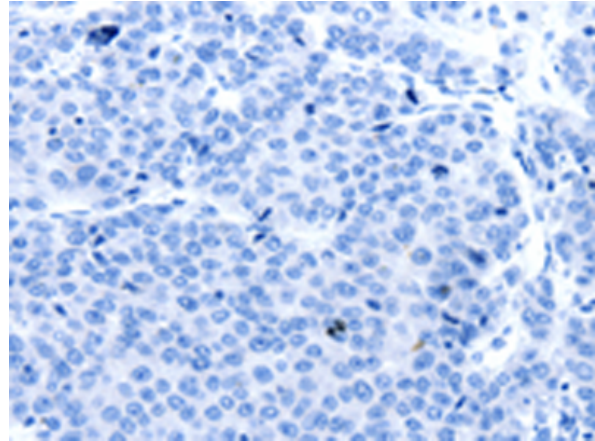
Constituents: PBS (without Mg²⁺ and Ca²⁺), pH 7.4, 150 mM NaCl, 0.05% Sodium Azide and 40% glycerol

Research Areas: Signal Transduction

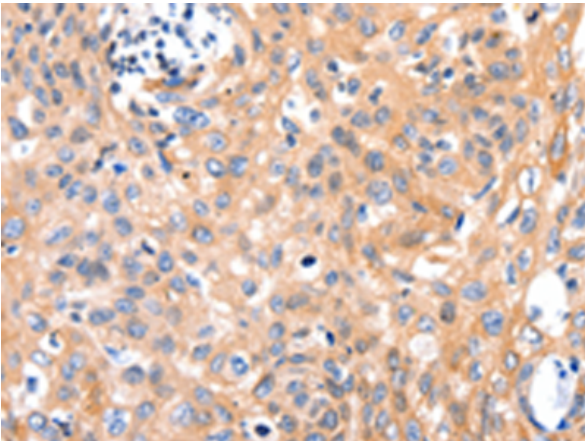
Storage & Shipping: Store at -20°C. Avoid repeated freezing and thawing



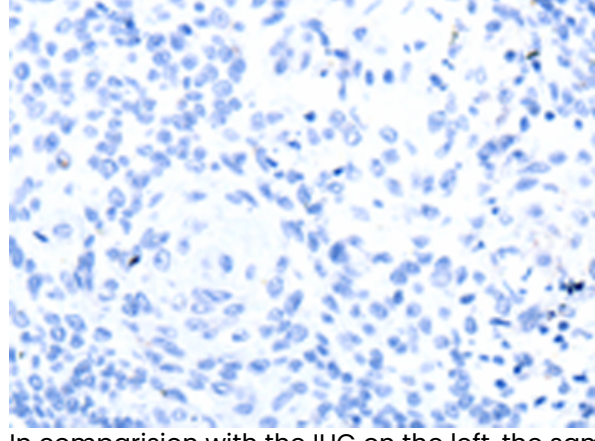
Immunohistochemistry analysis of paraffin embedded Human liver cancer tissue using 219930(MYL9 Antibody) at a dilution of 1/80(Cytoplasm).



In comparison with the IHC on the left, the same paraffin-embedded Human liver cancer tissue is first treated with the synthetic peptide and then with 219930(Anti-MYL9 Antibody) at dilution 1/80.



The image on the left is immunohistochemistry of paraffin-embedded Human cervical cancer tissue using 219930(Anti-MYL9 Antibody) at a dilution of 1/80.



In comparison with the IHC on the left, the same paraffin-embedded Human cervical cancer tissue is first treated with synthetic peptide and then with D260642(Anti-MYL9 Antibody) at dilution 1/80.



Gel: 12%SDS-PAGE, Lysate: 40 µg;
Lane 1-2: Jurkat cells, 231 cells;
Primary antibody: 219930(MYL9 Antibody) at dilution 1/1500;
Secondary antibody: Goat anti rabbit IgG at 1/8000 dilution;
Exposure time: 40 seconds



Product Description

Pioneering GTPase and Oncogene Product Development since 2010
