

## MYO1B RABBIT MAB

**Cat.#:** N262565

**Product Name:** Anti-MYO1B Rabbit Monoclonal Antibody

**Synonyms:** MYH-1c; MMI-alpha; MMIa

**UNIPROT ID:** O43795

**Background:** Motor protein that may participate in process critical to neuronal development and function such as cell migration, neurite outgrowth and vesicular transport.

**Immunogen:** Recombinant protein of human MYO1B

**Applications:** WB,IHC-P

**Recommended Dilutions:** WB: 1/500-1/1000 IHC: 1/50-1/100

**Host Species:** Rabbit

**Clonality:** Rabbit Monoclonal

**Clone ID:** R04-6D4

**MW:** Calculated MW: 132 kDa; Observed MW: 132 kDa

**Isotype:** IgG

**Purification:** Affinity Purified

**Species Reactivity:** Human,Mouse,Rat

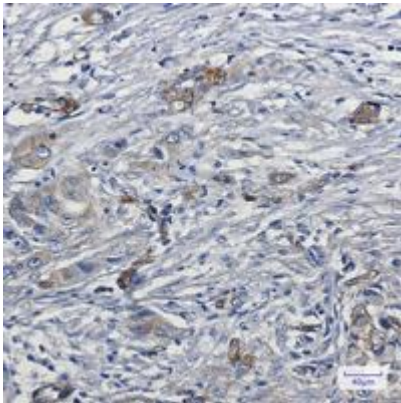
**Conjugation:** Unconjugated

**Modification:** Unmodified

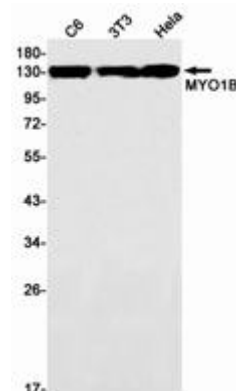
**Constituents:** PBS (without Mg<sup>2+</sup> and Ca<sup>2+</sup>), pH 7.3 containing 50% glycerol, 0.5% BSA and 0.02% sodium azide

**Research Areas:** Cell Biology

**Storage & Shipping:** Store at -20°C. Avoid repeated freezing and thawing



Immunohistochemistry analysis of paraffin-embedded Human lung cancer using MYO1B antibody. High-pressure and temperature Sodium Citrate pH 6.0 was used for antigen retrieval.



Western blot analysis of MYO1B in C6, 3T3, Hela lysates using MYO1B antibody.