

MYOD1 RABBIT PAB

Cat.#: S213673

Product Name: Anti-MYOD1 Rabbit Polyclonal Antibody

Synonyms: PUM; MYF3; MYOD; bHLHc1

UNIPROT ID: P15172 (Gene Accession - NP_002469)

Background: This gene encodes a nuclear protein that belongs to the basic helix-loop-helix family of transcription factors and the myogenic factors subfamily. It regulates muscle cell differentiation by inducing cell cycle arrest, a prerequisite for myogenic initiation. The protein is also involved in muscle regeneration. It activates its own transcription which may stabilize commitment to myogenesis.

Immunogen: Synthetic peptide of human MYOD1

Applications: ELISA, WB, IHC

Recommended Dilutions: IHC: 50-200;WB: 200-1000;ELISA: 5000-10000

Host Species: Rabbit

Clonality: Rabbit Polyclonal

Isotype: Immunogen-specific rabbit IgG

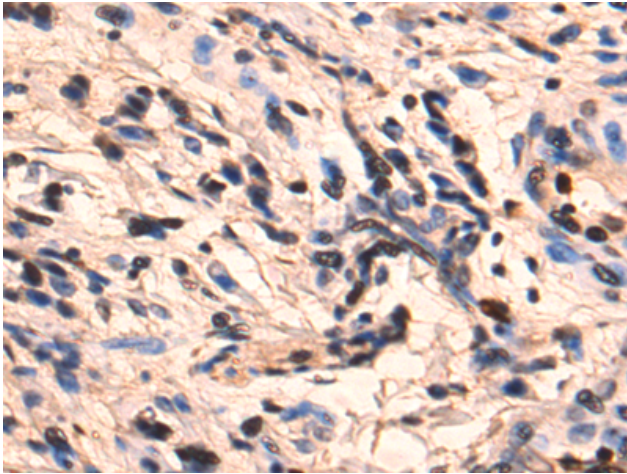
Purification: Antigen affinity purification

Species Reactivity: Human, Mouse, Rat

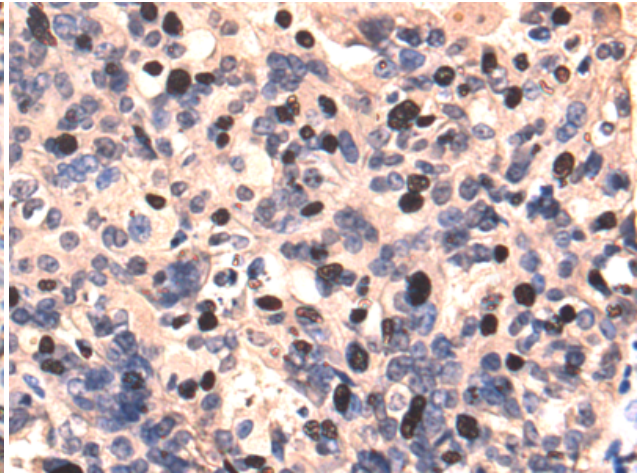
Constituents: PBS (without Mg²⁺ and Ca²⁺), pH 7.4, 150 mM NaCl, 0.05% Sodium Azide and 40% glycerol

Research Areas: Epigenetics and Nuclear Signaling, Developmental Biology

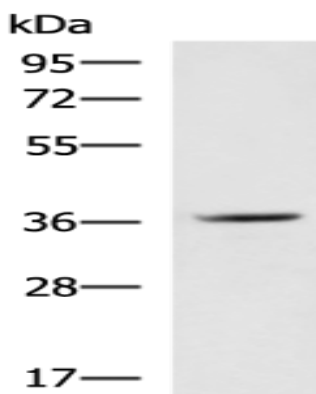
Storage & Shipping: Store at -20°C. Avoid repeated freezing and thawing



Immunohistochemistry analysis of paraffin-embedded Human esophagus cancer tissue using 213673(MYOD1 Antibody) at a dilution of 1/85(Nucleus).



Immunohistochemistry analysis of paraffin-embedded Human breast cancer tissue using 213673(Anti-MYOD1 Antibody) at a dilution of 1/85.



Gel: 8%SDS-PAGE, Lysate: 40 μ g;
Lane: Mouse brain tissue lysate;
Primary antibody: 213673(MYOD1 Antibody) at dilution 1/400;
Secondary antibody: HRP-conjugated Goat anti rabbit IgG at 1/5000 dilution;
Exposure time: 2 minutes