

## MYOMESIN 2 RABBIT PAB

**Cat.#:** N225458

**Product Name:** Anti-Myomesin 2 Rabbit pAb

**Synonyms:** TTNAP

**UNIPROT ID:** P54296

**Background:** Major component of the vertebrate myofibrillar M band. Binds myosin, titin, and light meromyosin. This binding is dose dependent.

**Immunogen:** The antiserum was produced against synthesized peptide derived from human MYOM2. AA range:612-661

**Applications:** WB,ELISA

**Recommended Dilutions:** WB: 1/500-1/1000 ELISA: 1/10000

**Host Species:** Rabbit

**Clonality:** Rabbit Polyclonal

**Clone ID:** -

**MW:** Calculated MW: 165 kDa; Observed MW: 165 kDa

**Isotype:** IgG

**Purification:** Affinity Chromatography

**Species Reactivity:** Human,Mouse,Monkey

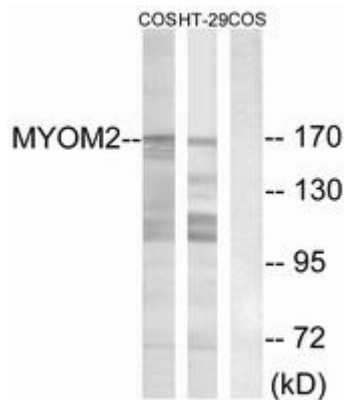
**Conjugation:** Unconjugated

**Modification:** Unmodified

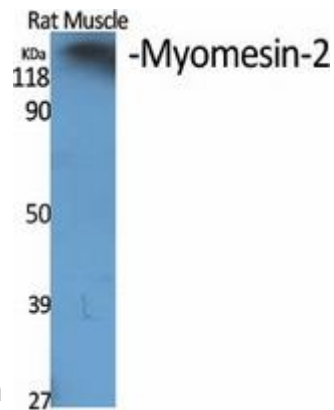
**Constituents:** PBS (without Mg<sup>2+</sup> and Ca<sup>2+</sup>), pH 7.3 containing 50% glycerol, 0.5% BSA and 0.02% sodium azide

**Research Areas:** Signal Transduction

**Storage & Shipping:** Store at -20°C. Avoid repeated freezing and thawing



Western blot analysis of Myomesin 2 in COS7 and HT-29 lysates using MYOM2 antibody. The lane on the right is blocked with the synthesized peptide.



Western blot analysis of Myomesin 2 in various lysates using Myomesin 2 antibody.



Western blot analysis of Myomesin 2 in HT-29 lysates using Myomesin2 antibody.