

MYOSIN PHOSPHATASE RABBIT PAB

Cat.#: N225373

Product Name: Anti-Myosin Phosphatase Rabbit pAb

Synonyms: PPP1R12A; MBS; MYPT1; Protein phosphatase 1 regulatory subunit 12A; Myosin phosphatase-targeting subunit 1; Myosin phosphatase target subunit 1; Protein phosphatase myosin-binding subunit

UNIPROT ID: O14974

Background: Key regulator of protein phosphatase 1C (PPP1C). Mediates binding to myosin. As part of the PPP1C complex, involved in dephosphorylation of PLK1. Capable of inhibiting HIF1A-dependent suppression of HIF1A activity.

Immunogen: The antiserum was produced against synthesized peptide derived from human MYPT1. AA range:661-710

Applications: WB,IHC-P,ELISA

Recommended Dilutions: WB: 1/500-1/1000 IHC: 1/50-1/100 ELISA: 1/10000

Host Species: Rabbit

Clonality: Rabbit Polyclonal

Clone ID: -

MW: Calculated MW: 115 kDa; Observed MW: 140 kDa

Isotype: IgG

Purification: Affinity Chromatography

Species Reactivity: Human,Mouse,Rat,Monkey

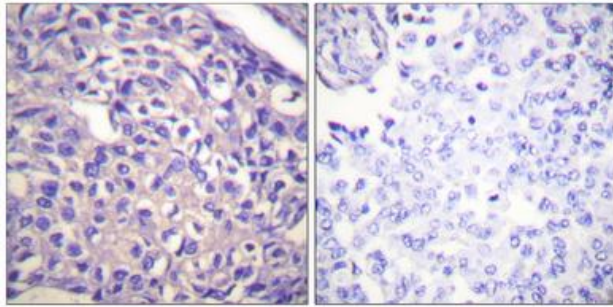
Conjugation: Unconjugated

Modification: Unmodified

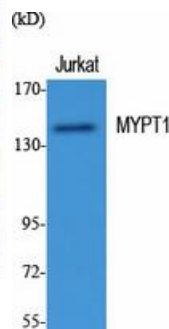
Constituents: PBS (without Mg²⁺ and Ca²⁺), pH 7.3 containing 50% glycerol, 0.5% BSA and 0.02% sodium azide

Research Areas: Signal Transduction

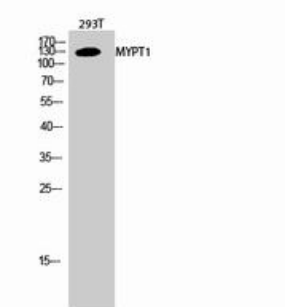
Storage & Shipping: Store at -20°C. Avoid repeated freezing and thawing



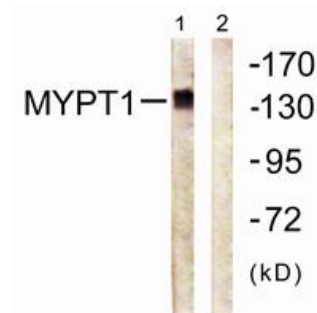
Immunohistochemistry analysis of paraffin-embedded Human breast carcinoma tissue using MYPT1 antibody. High-pressure and temperature Sodium Citrate pH 6.0 was used for antigen retrieval. Sample with blocking peptide on the right.



Western blot analysis of Myosin Phosphatase in various lysates using Myosin Phosphatase antibody.



Western blot analysis of Myosin Phosphatase in 293T lysates using MYPT1 antibody.



Western blot analysis of Myosin Phosphatase in COS7 lysates using Myosin Phosphatase antibody. The lane on the right is blocked with the synthesized peptide.