

## MYOZ1 RABBIT PAB

**Cat.#:** S216664

**Product Name:** Anti-MYOZ1 Rabbit Polyclonal Antibody

**Synonyms:** CS-2; FATZ; MYOZ

**UNIPROT ID:** Q9NP98 (Gene Accession - BC025753 )

**Background:** The protein encoded by this gene is primarily expressed in the skeletal muscle, and belongs to the myozenin family. Members of this family function as calcineurin-interacting proteins that help tether calcineurin to the sarcomere of cardiac and skeletal muscle. They play an important role in modulation of calcineurin signaling.

**Immunogen:** Fusion protein of human MYOZ1

**Applications:** ELISA, WB, IHC

**Recommended Dilutions:** IHC: 150–300;WB: 1000–5000;ELISA: 5000–10000

**Host Species:** Rabbit

**Clonality:** Rabbit Polyclonal

**Isotype:** Immunogen-specific rabbit IgG

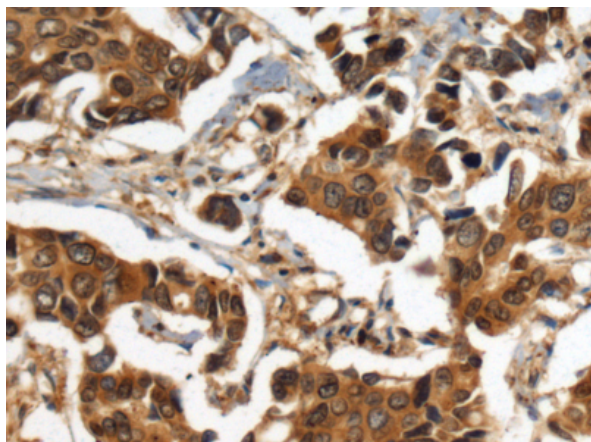
**Purification:** Antigen affinity purification

**Species Reactivity:** Human, Mouse

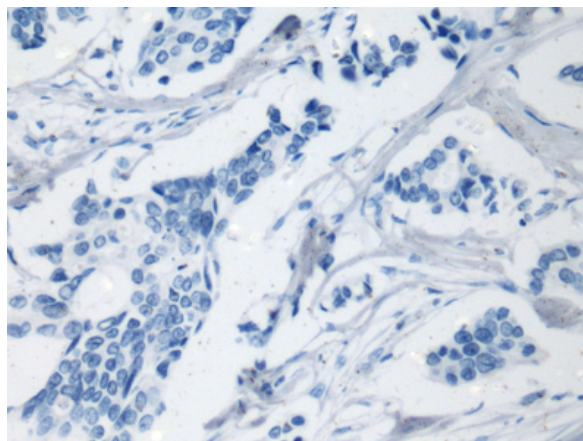
**Constituents:** PBS (without Mg<sup>2+</sup> and Ca<sup>2+</sup>), pH 7.4, 150 mM NaCl, 0.05% Sodium Azide and 40% glycerol

**Research Areas:** Signal Transduction, Cardiovascular

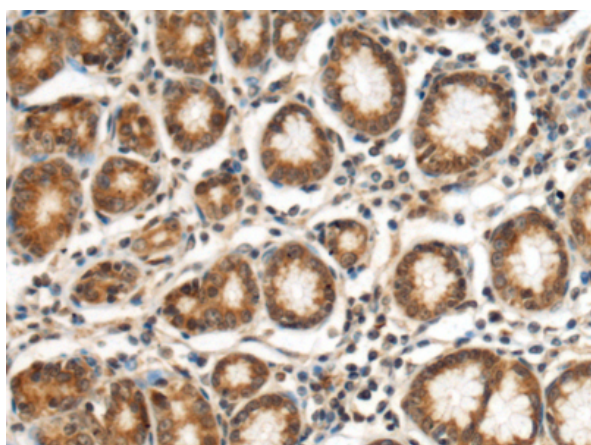
**Storage & Shipping:** Store at -20°C. Avoid repeated freezing and thawing



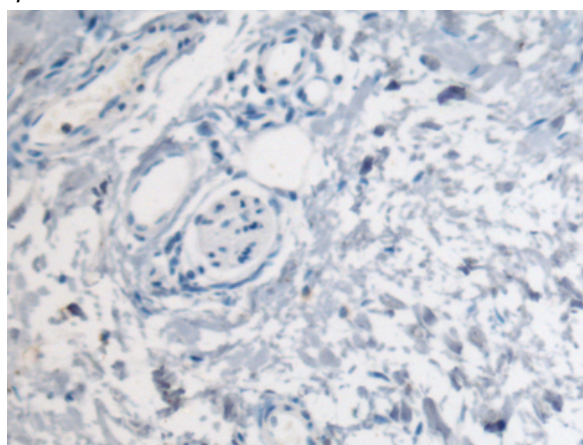
Immunohistochemistry analysis of paraffin embedded Human breast cancer tissue using 216664(MYOZ1 Antibody) at a dilution of 1/140(Cytoplasm).



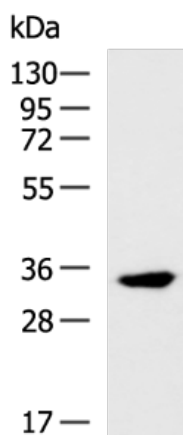
In comparison with the IHC on the left, the same paraffin-embedded Human breast cancer tissue is first treated with the fusion protein and then with 216664(Anti-MYOZ1 Antibody) at dilution 1/140.



The image on the left is immunohistochemistry of paraffin-embedded Human gastric cancer tissue using 216664(Anti-MYOZ1 Antibody) at a dilution of 1/140.



In comparison with the IHC on the left, the same paraffin-embedded Human gastric cancer tissue is first treated with fusion protein and then with D221011(Anti-MYOZ1 Antibody) at dilution 1/140.



Gel: 8%SDS-PAGE, Lysate: 40 µg;  
 Lane: Mouse skeletal muscle tissue lysate;  
 Primary antibody: 216664(MYOZ1 Antibody) at dilution 1/1000;  
 Secondary antibody: HRP-conjugated Goat anti rabbit IgG at 1/5000 dilution;  
 Exposure time: 15 seconds



# Product Description

Pioneering GTPase and Oncogene Product Development since 2010

---