

MYSM1 RABBIT PAB

Cat.#: S220130

Product Name: Anti-MYSM1 Rabbit Polyclonal Antibody

Synonyms: 2ADUB, 2A-DUB, RP4-592A1.1

UNIPROT ID: Q5VVJ2 (Gene Accession - NP_001078956)

Background: Metalloprotease that specifically deubiquitinates monoubiquitinated histone H2A, a specific tag for epigenetic transcriptional repression, thereby acting as a coactivator. Preferentially deubiquitinates monoubiquitinated H2A in hyperacetylated nucleosomes. Deubiquitination of histone H2A leads to facilitate the phosphorylation and dissociation of histone H1 from the nucleosome. Acts as a coactivator by participating in the initiation and elongation steps of androgen receptor (AR)-induced gene activation.

Immunogen: Synthetic peptide of human MYSM1

Applications: ELISA, WB, IHC

Recommended Dilutions: IHC: 50-200;WB: 500-2000;ELISA: 2000-10000

Host Species: Rabbit

Clonality: Rabbit Polyclonal

Isotype: Immunogen-specific rabbit IgG

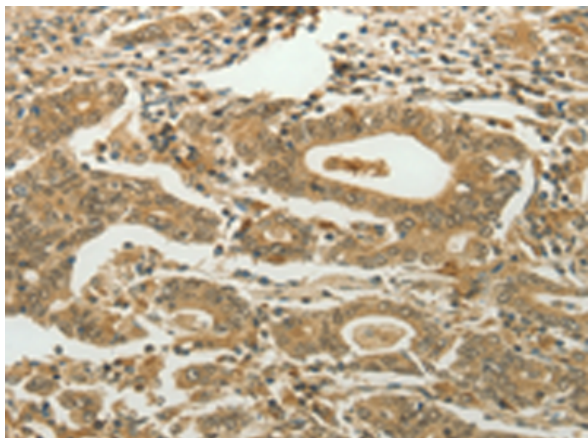
Purification: Antigen affinity purification

Species Reactivity: Human, Mouse

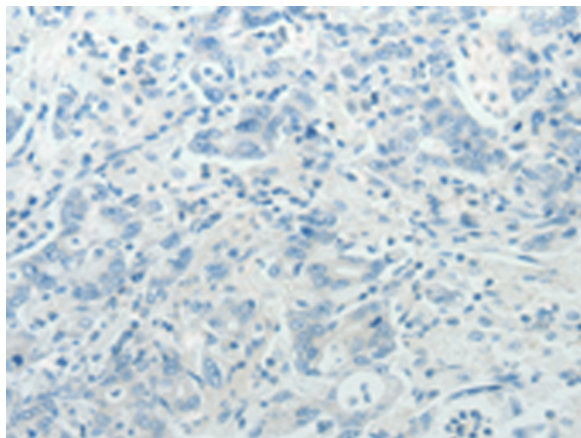
Constituents: PBS (without Mg²⁺ and Ca²⁺), pH 7.4, 150 mM NaCl, 0.05% Sodium Azide and 40% glycerol

Research Areas: Epigenetics and Nuclear Signaling

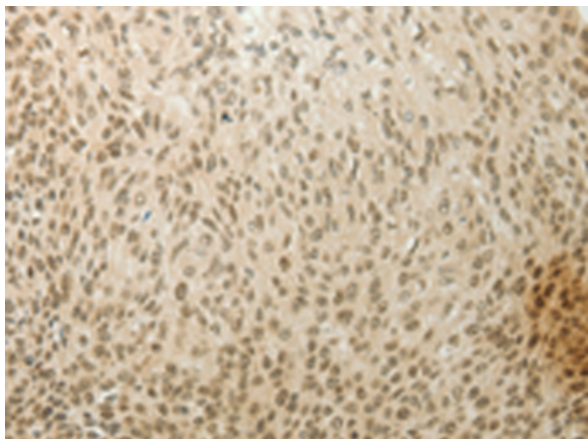
Storage & Shipping: Store at -20°C. Avoid repeated freezing and thawing



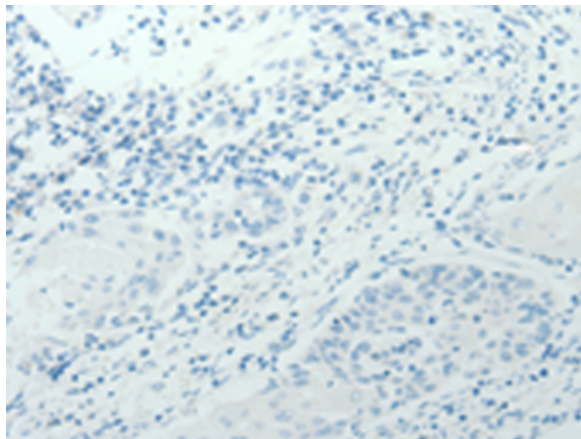
Immunohistochemistry analysis of paraffin embedded Human gastric cancer tissue using 220130(MYSMI Antibody) at a dilution of 1/60(Nucleus).



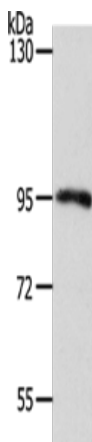
In comparison with the IHC on the left, the same paraffin-embedded Human gastric cancer tissue is first treated with the synthetic peptide and then with 220130(Anti-MYSMI Antibody) at dilution 1/60.



The image on the left is immunohistochemistry of paraffin-embedded Human cervical cancer tissue using 220130(Anti-MYSMI Antibody) at a dilution of 1/60.



In comparison with the IHC on the left, the same paraffin-embedded Human cervical cancer tissue is first treated with synthetic peptide and then with D261010(Anti-MYSMI Antibody) at dilution 1/60.



Gel: 8%SDS-PAGE, Lysate: 50 µg;
Lane: Mouse kidney tissue;
Primary antibody: 220130(MYSMI Antibody) at dilution 1/1100;
Secondary antibody: Goat anti rabbit IgG at 1/8000 dilution;
Exposure time: 40 seconds



Product Description

Pioneering GTPase and Oncogene Product Development since 2010
