

## NAA60 RABBIT PAB

**Cat.#:** S218205

**Product Name:** Anti-NAA60 Rabbit Polyclonal Antibody

**Synonyms:** HAT4; NatF; NAT15; hNaa60

**UNIPROT ID:** Q9H7X0 (Gene Accession - BC011267 )

**Background:** This gene encodes an enzyme that localizes to the Golgi apparatus, where it transfers an acetyl group to the N-terminus of free proteins. This enzyme acts on histones, and its activity is important for chromatin assembly and chromosome integrity. Alternative splicing and the use of alternative promoters results in multiple transcript variants. The upstream promoter is located in a differentially methylated region (DMR) and undergoes imprinting; transcript variants originating from this position are expressed from the maternal allele. [provided by RefSeq, Nov 2015]

**Immunogen:** Fusion protein of human NAA60

**Applications:** ELISA, IHC

**Recommended Dilutions:** IHC: 100-200; ELISA: 5000-10000

**Host Species:** Rabbit

**Clonality:** Rabbit Polyclonal

**Isotype:** Immunogen-specific rabbit IgG

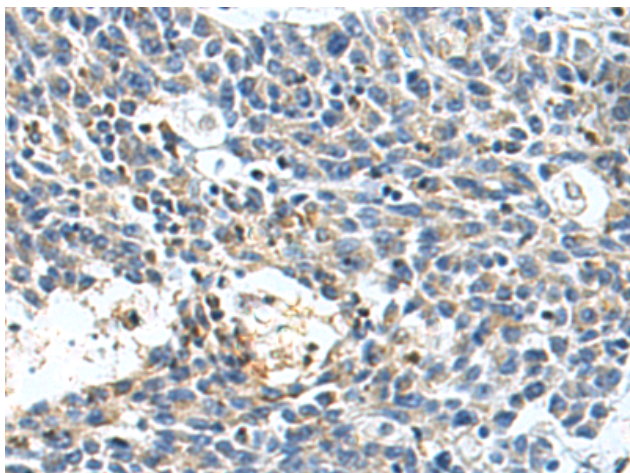
**Purification:** Antigen affinity purification

**Species Reactivity:** Human, Mouse, Rat

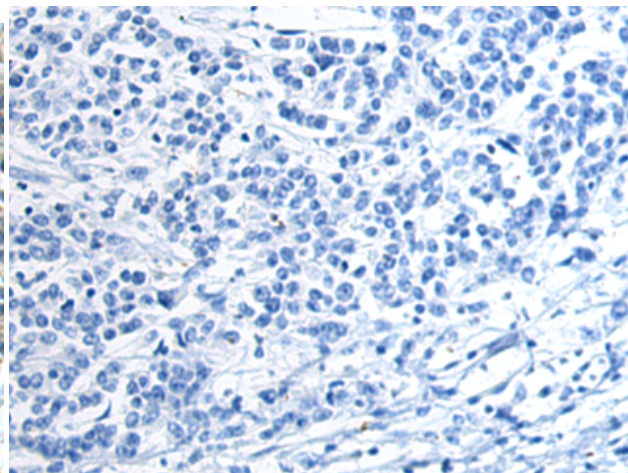
**Constituents:** PBS (without Mg<sup>2+</sup> and Ca<sup>2+</sup>), pH 7.4, 150 mM NaCl, 0.05% Sodium Azide and 40% glycerol

**Research Areas:** Cell Biology

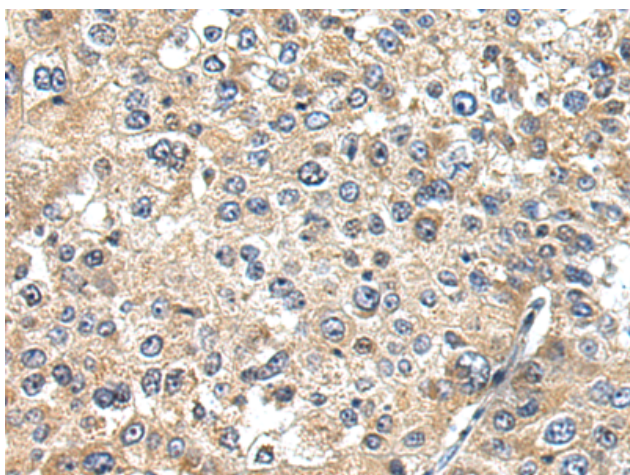
**Storage & Shipping:** Store at -20°C. Avoid repeated freezing and thawing



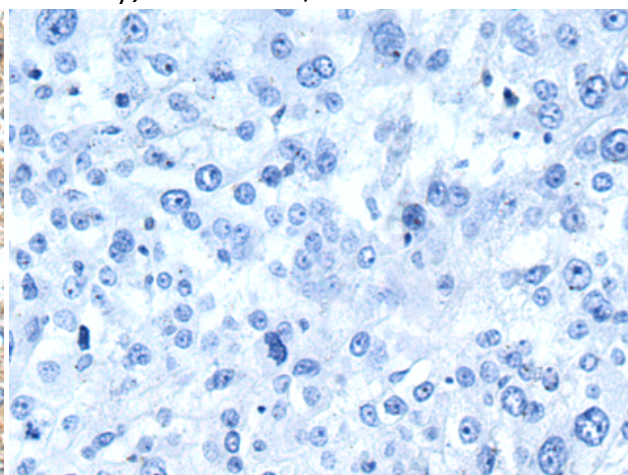
Immunohistochemistry analysis of paraffin embedded Human colorectal cancer tissue using 218205(NAA60 Antibody) at a dilution of 1/100(Cytoplasm).



In comparison with the IHC on the left, the same paraffin-embedded Human colorectal cancer tissue is first treated with the fusion protein and then with 218205(Anti-NAA60 Antibody) at dilution 1/100.



The image on the left is immunohistochemistry of paraffin-embedded Human liver cancer tissue using 218205(Anti-NAA60 Antibody) at a dilution of 1/100.



In comparison with the IHC on the left, the same paraffin-embedded Human liver cancer tissue is first treated with fusion protein and then with D223944(Anti-NAA60 Antibody) at dilution 1/100.