

NABP1 RABBIT PAB

Cat.#: S219255

Product Name: Anti-NABP1 Rabbit Polyclonal Antibody

Synonyms: SSB2; OBFC2A; SOSS-B2

UNIPROT ID: Q96AH0 (Gene Accession - BC017114)

Background: Single-stranded DNA (ssDNA)-binding proteins, such as OBFC2A, are ubiquitous and essential for a variety of DNA metabolic processes, including replication, recombination, and detection and repair of damage (Richard et al., 2008 [PubMed 18449195]).

Immunogen: Fusion protein of human NABP1

Applications: ELISA, WB, IHC

Recommended Dilutions: IHC: 50-200;WB: 500-2000;ELISA: 5000-10000

Host Species: Rabbit

Clonality: Rabbit Polyclonal

Isotype: Immunogen-specific rabbit IgG

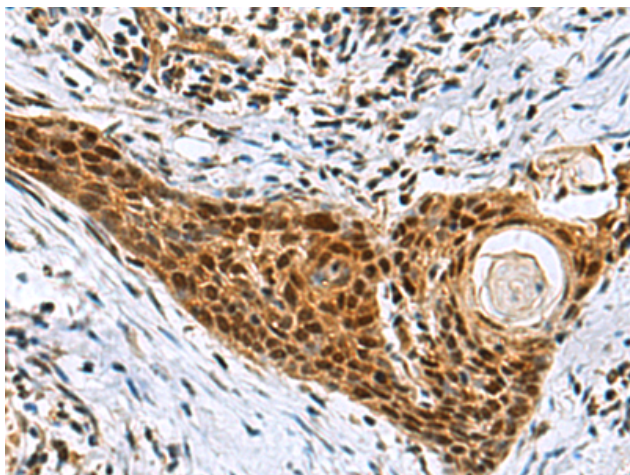
Purification: Antigen affinity purification

Species Reactivity: Human, Mouse, Rat

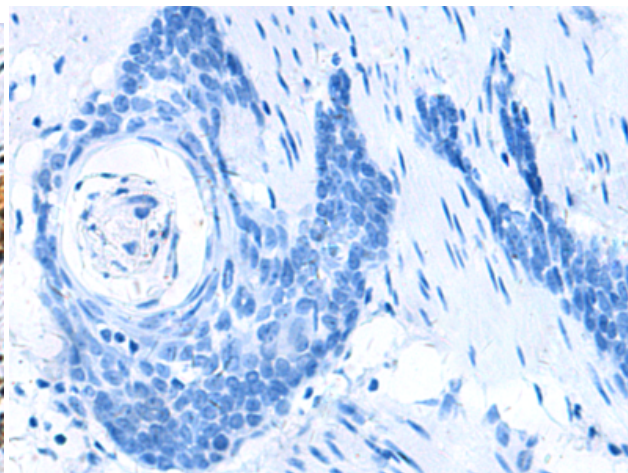
Constituents: PBS (without Mg²⁺ and Ca²⁺), pH 7.4, 150 mM NaCl, 0.05% Sodium Azide and 40% glycerol

Research Areas: Epigenetics and Nuclear Signaling

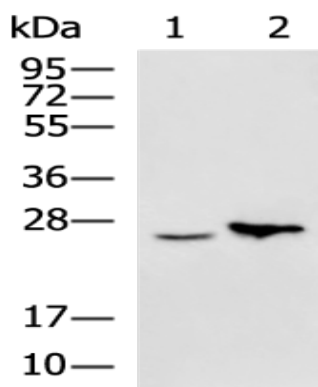
Storage & Shipping: Store at -20°C. Avoid repeated freezing and thawing



Immunohistochemistry analysis of paraffin embedded Human esophagus cancer tissue using 219255(NABP1 Antibody) at a dilution of 1/80(Nucleus).



In comparison with the IHC on the left, the same paraffin-embedded Human esophagus cancer tissue is first treated with the fusion protein and then with 219255(Anti-NABP1 Antibody) at dilution 1/80.



Gel: 12%SDS-PAGE, Lysate: 40 µg;
 Lane 1-2: Jurkat cell, Mouse liver tissue lysates;
 Primary antibody: 219255(NABP1 Antibody) at dilution 1/500;
 Secondary antibody: HRP-conjugated Goat anti rabbit IgG at 1/5000 dilution;
 Exposure time: 5 minutes