

## NAPA RABBIT PAB

**Cat.#:** S216787

**Product Name:** Anti-NAPA Rabbit Polyclonal Antibody

**Synonyms:** SNAPA

**UNIPROT ID:** P54920 (Gene Accession - BC001165 )

**Background:** This gene encodes a member of the soluble NSF attachment protein (SNAP) family. SNAP proteins play a critical role in the docking and fusion of vesicles to target membranes as part of the 20S NSF-SNAP-SNARE complex. The encoded protein plays a role in the completion of membrane fusion by mediating the interaction of N-ethylmaleimide-sensitive factor (NSF) with the vesicle-associated and membrane-associated SNAP receptor (SNARE) complex and stimulating the ATPase activity of NSF. Alternatively spliced transcript variants have been observed for this gene.

**Immunogen:** Fusion protein of human NAPA

**Applications:** ELISA, WB, IHC

**Recommended Dilutions:** IHC: 25-100;WB: 500-2000;ELISA: 2000-5000

**Host Species:** Rabbit

**Clonality:** Rabbit Polyclonal

**Isotype:** Immunogen-specific rabbit IgG

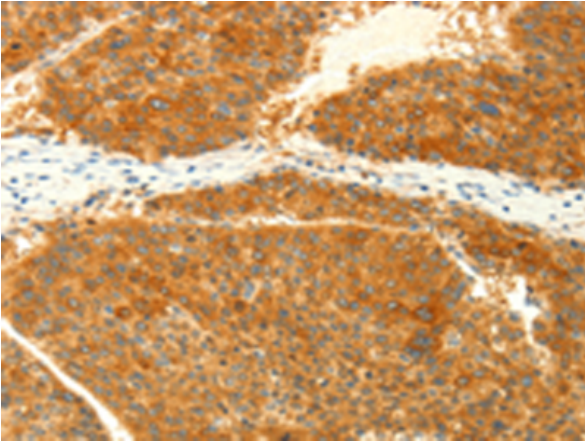
**Purification:** Antigen affinity purification

**Species Reactivity:** Human, Mouse, Rat

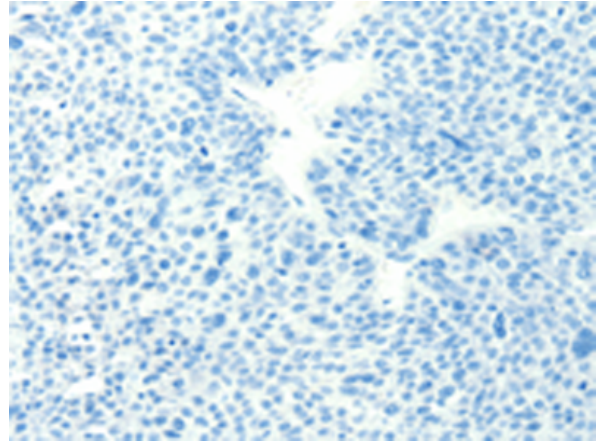
**Constituents:** PBS (without Mg<sup>2+</sup> and Ca<sup>2+</sup>), pH 7.4, 150 mM NaCl, 0.05% Sodium Azide and 40% glycerol

**Research Areas:** Signal Transduction

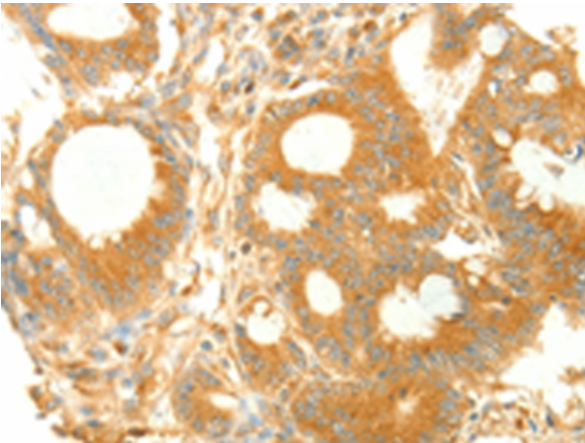
**Storage & Shipping:** Store at -20°C. Avoid repeated freezing and thawing



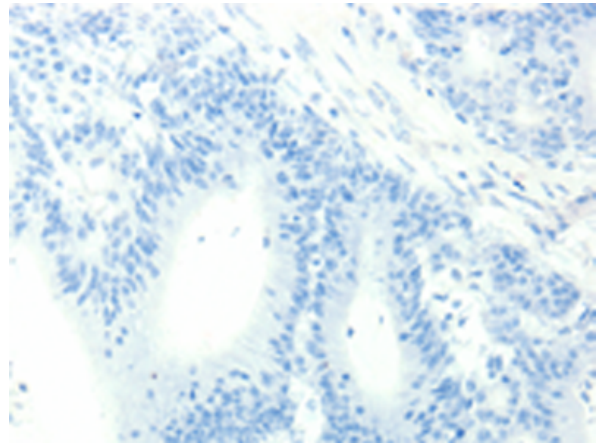
Immunohistochemistry analysis of paraffin embedded Human liver cancer tissue using 216787(NAPA Antibody) at a dilution of 1/25(Cytoplasm ).



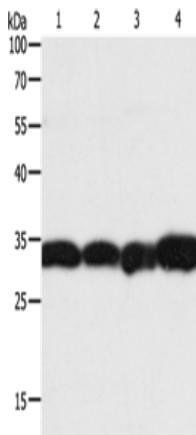
In comparison with the IHC on the left, the same paraffin-embedded Human liver cancer tissue is first treated with the fusion protein and then with 216787(Anti-NAPA Antibody) at dilution 1/25.



The image on the left is immunohistochemistry of paraffin-embedded Human colon cancer tissue using 216787(Anti-NAPA Antibody) at a dilution of 1/25.



In comparison with the IHC on the left, the same paraffin-embedded Human colon cancer tissue is first treated with fusion protein and then with D221237(Anti-NAPA Antibody) at dilution 1/25.



Gel: 12%SDS-PAGE, Lysate: 40 µg;  
Lane 1-4: Hela cells, Jurkat cells, human liver cancer tissue, mouse brain tissue;  
Primary antibody: 216787(NAPA Antibody) at dilution 1/350;  
Secondary antibody: Goat anti rabbit IgG at 1/8000 dilution;  
Exposure time: 3 seconds



# Product Description

Pioneering GTPase and Oncogene Product Development since 2010

---