

## NAT10 RABBIT MAB

**Cat.#:** N261562

**Product Name:** Anti-NAT10 Rabbit Monoclonal Antibody

**Synonyms:** ALP; hALP; N acetyltransferase like protein; NAT10; NET43

**UNIPROT ID:** Q9H0A0

**Background:** Has protein acetyltransferase activity in vitro. Can acetylate both histones and microtubules. Histone acetylation may regulate transcription and mitotic chromosome de-condensation.

**Immunogen:** Recombinant protein of human NAT10

**Applications:** WB,ICC/IF,IP

**Recommended Dilutions:** WB: 1/500-1/1000 IF: 1/50-1/200 IP: 1/20

**Host Species:** Rabbit

**Clonality:** Rabbit Monoclonal

**Clone ID:** R05-1C8

**MW:** Calculated MW: 116 kDa; Observed MW: 116 kDa

**Isotype:** IgG

**Purification:** Affinity Purified

**Species Reactivity:** Human,Rat

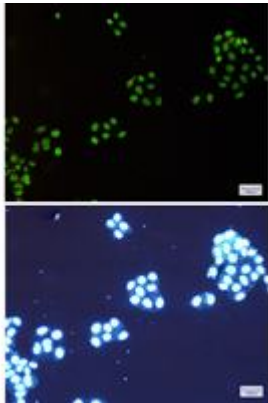
**Conjugation:** Unconjugated

**Modification:** Unmodified

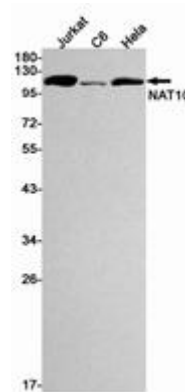
**Constituents:** PBS (without Mg<sup>2+</sup> and Ca<sup>2+</sup>), pH 7.3 containing 50% glycerol, 0.5% BSA and 0.02% sodium azide

**Research Areas:** Cell Biology

**Storage & Shipping:** Store at -20°C. Avoid repeated freezing and thawing



Immunocytochemistry analysis of NAT10(green) in HeLa using NAT10 antibody, and DAPI(blue)



Western blot analysis of NAT10 in Jurkat, C6, HeLa lysates using NAT10 antibody.