

## NAT8L RABBIT PAB

**Cat.#:** S221800

**Product Name:** Anti-NAT8L Rabbit Polyclonal Antibody

**Synonyms:** CML3; NACED; NAT8-LIKE

**UNIPROT ID:** Q8N9F0 (Gene Accession - NP\_848652 )

**Background:** This gene encodes a single-pass membrane protein, which contains a conserved sequence of the GCN5 or NAT superfamily of N-acetyltransferases and is a member of the N-acetyltransferase (NAT) superfamily. This protein is a neuron-specific protein and is the N-acetyl aspartate (NAA) biosynthetic enzyme, catalyzing the NAA synthesis from L-aspartate and acetyl-CoA. NAA is a major storage and transport form of acetyl coenzyme A specific to the nervous system. The gene mutation results in primary NAA deficiency (hypoacetylaspartia).

**Immunogen:** Synthetic peptide of human NAT8L

**Applications:** ELISA, IHC

**Recommended Dilutions:** IHC: 50-200; ELISA: 5000-10000

**Host Species:** Rabbit

**Clonality:** Rabbit Polyclonal

**Isotype:** Immunogen-specific rabbit IgG

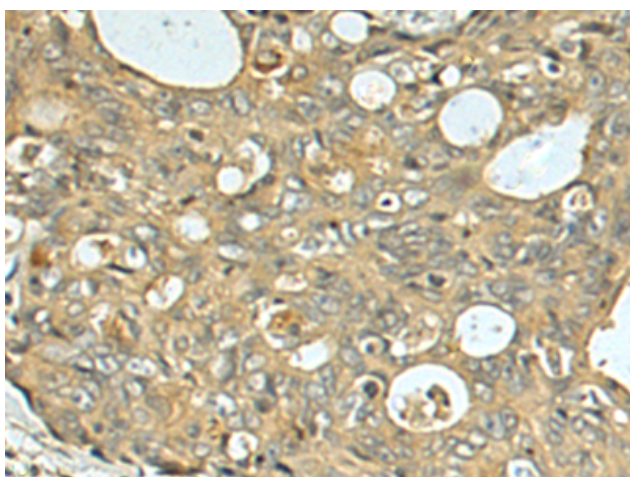
**Purification:** Antigen affinity purification

**Species Reactivity:** Human, Mouse, Rat

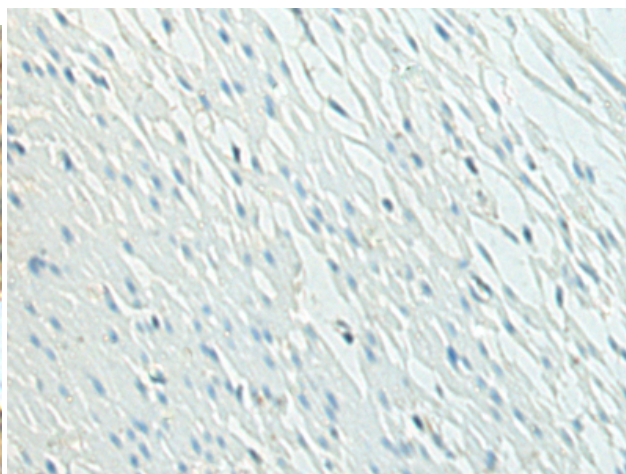
**Constituents:** PBS (without Mg<sup>2+</sup> and Ca<sup>2+</sup>), pH 7.4, 150 mM NaCl, 0.05% Sodium Azide and 40% glycerol

**Research Areas:** Metabolism

**Storage & Shipping:** Store at -20°C. Avoid repeated freezing and thawing



Immunohistochemistry analysis of paraffin embedded Human colorectal cancer using 221800(NAT8L Antibody) at a dilution of 1/60(Cytoplasm ).



In comparison with the IHC on the left, the same paraffin-embedded Human colorectal cancer is first treated with the synthetic peptide and then with 221800(Anti-NAT8L Antibody) at dilution 1/60.