

NAV1.7 RABBIT PAB

Cat.#: N225151

Product Name: Anti-Nav1.7 Rabbit pAb

Synonyms: SCN9A; NENA; Sodium channel protein type 9 subunit alpha; Neuroendocrine sodium channel; hNE-Na; Peripheral sodium channel 1; PNI; Sodium channel protein type IX subunit alpha; Voltage-gated sodium channel subunit alpha Nav1.7

UNIPROT ID: Q15858

Background: This gene encodes a voltage-gated sodium channel which plays a significant role in nociception signaling. Mutations in this gene have been associated with primary erythralgia, channelopathy-associated insensitivity to pain, and paroxysmal extreme pain disorder.

Immunogen: The antiserum was produced against synthesized peptide derived from human SCN9A. AA range:651-700

Applications: WB,IHC-P,ELISA

Recommended Dilutions: WB: 1/500-1/1000 IHC: 1/50-1/100 ELISA: 1/10000

Host Species: Rabbit

Clonality: Rabbit Polyclonal

Clone ID: -

MW: Calculated MW: 226 kDa; Observed MW: 220 kDa

Isotype: IgG

Purification: Affinity Purified

Species Reactivity: Human,Mouse,Rat

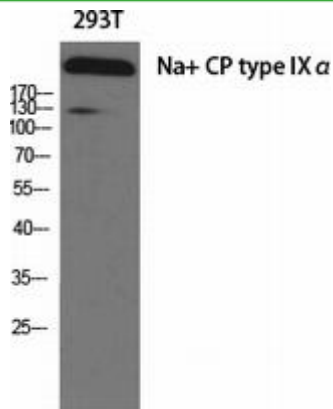
Conjugation: Unconjugated

Modification: Unmodified

Constituents: PBS (without Mg²⁺ and Ca²⁺), pH 7.3 containing 50% glycerol, 0.5% BSA and 0.02% sodium azide

Research Areas: Neuroscience

Storage & Shipping: Store at -20°C. Avoid repeated freezing and thawing



Western blot analysis of Nav1.7 in various lysates using Nav1.7 antibody.