

## NAV2 RABBIT PAB

**Cat.#:** S219543

**Product Name:** Anti-NAV2 Rabbit Polyclonal Antibody

**Synonyms:** HELAD1; RAINB1; POMFIL2; UNC53H2; STEERIN2

**UNIPROT ID:** Q8IVL1 (Gene Accession - BC016054 )

**Background:** This gene encodes a member of the neuron navigator gene family, which may play a role in cellular growth and migration. Multiple transcript variants encoding different isoforms have been found for this gene.

**Immunogen:** Fusion protein of human NAV2

**Applications:** ELISA, IHC

**Recommended Dilutions:** IHC: 50-200; ELISA: 5000-10000

**Host Species:** Rabbit

**Clonality:** Rabbit Polyclonal

**Isotype:** Immunogen-specific rabbit IgG

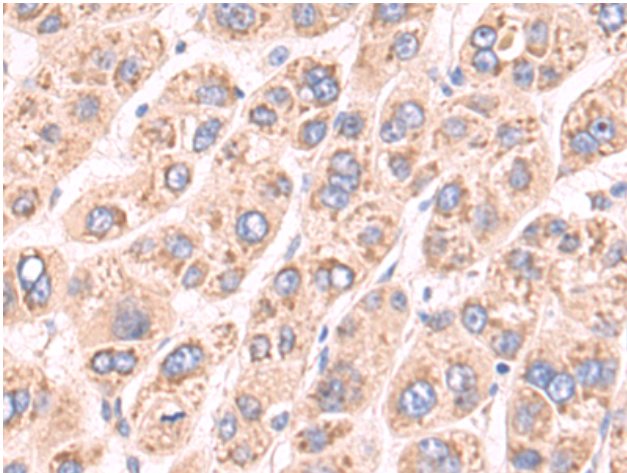
**Purification:** Antigen affinity purification

**Species Reactivity:** Human

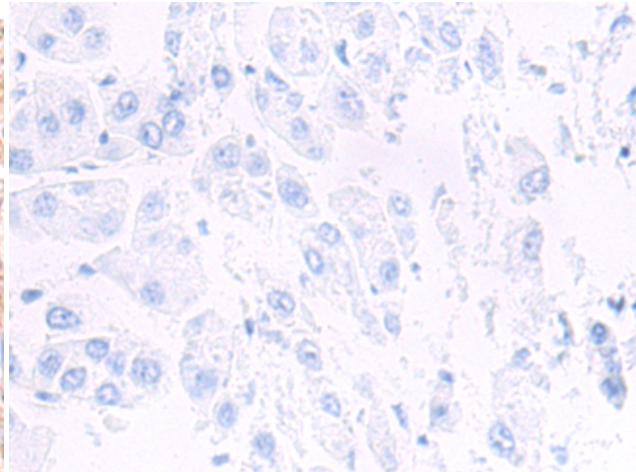
**Constituents:** PBS (without Mg<sup>2+</sup> and Ca<sup>2+</sup>), pH 7.4, 150 mM NaCl, 0.05% Sodium Azide and 40% glycerol

**Research Areas:** Neuroscience

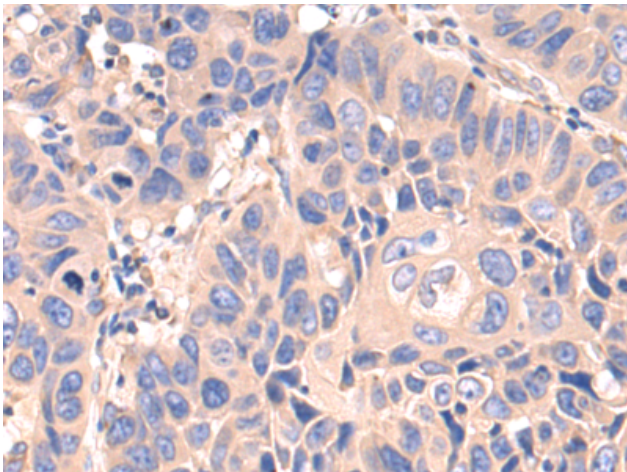
**Storage & Shipping:** Store at -20°C. Avoid repeated freezing and thawing



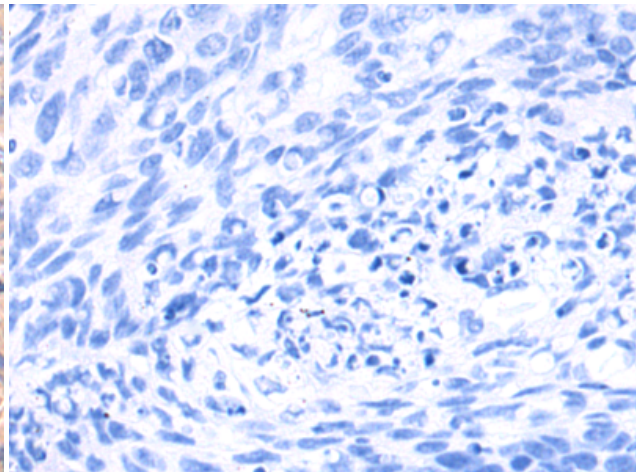
Immunohistochemistry analysis of paraffin embedded Human liver cancer tissue using 219543(NAV2 Antibody) at a dilution of 1/70(Cytoplasm).



In comparison with the IHC on the left, the same paraffin-embedded Human liver cancer tissue is first treated with the fusion protein and then with 219543(Anti-NAV2 Antibody) at dilution 1/70.



The image on the left is immunohistochemistry of paraffin-embedded Human lung cancer tissue using 219543(Anti-NAV2 Antibody) at a dilution of 1/70.



In comparison with the IHC on the left, the same paraffin-embedded Human lung cancer tissue is first treated with fusion protein and then with D227614(Anti-NAV2 Antibody) at dilution 1/70.