

NCAN RABBIT PAB

Cat.#: S219948

Product Name: Anti-NCAN Rabbit Polyclonal Antibody

Synonyms: CSPG3

UNIPROT ID: O14594 (Gene Accession - NP_004377)

Background: Neurocan is a chondroitin sulfate proteoglycan thought to be involved in the modulation of cell adhesion and migration.

Immunogen: Synthetic peptide of human NCAN

Applications: ELISA, WB, IHC

Recommended Dilutions: IHC: 40-200;WB: 1000-5000;ELISA: 5000-10000

Host Species: Rabbit

Clonality: Rabbit Polyclonal

Isotype: Immunogen-specific rabbit IgG

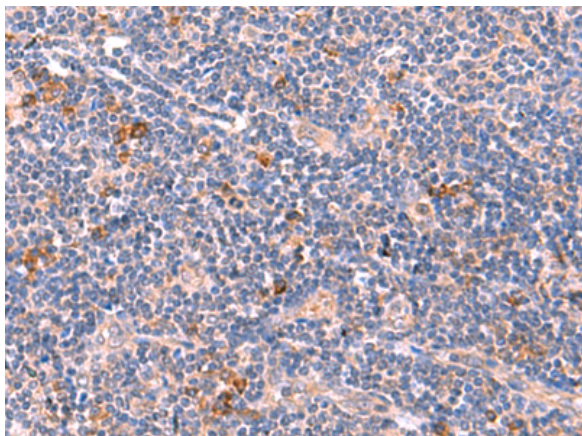
Purification: Antigen affinity purification

Species Reactivity: Human, Mouse, Rat

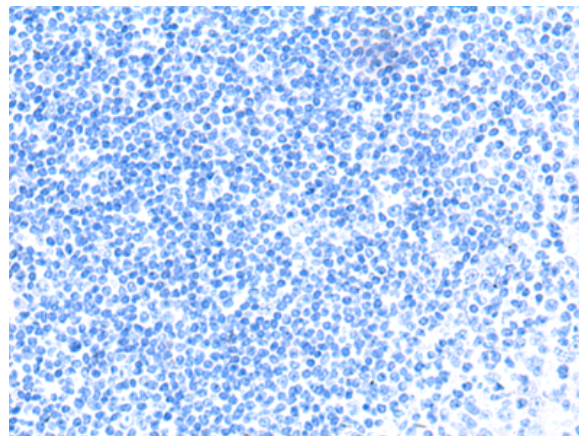
Constituents: PBS (without Mg²⁺ and Ca²⁺), pH 7.4, 150 mM NaCl, 0.05% Sodium Azide and 40% glycerol

Research Areas: Neuroscience

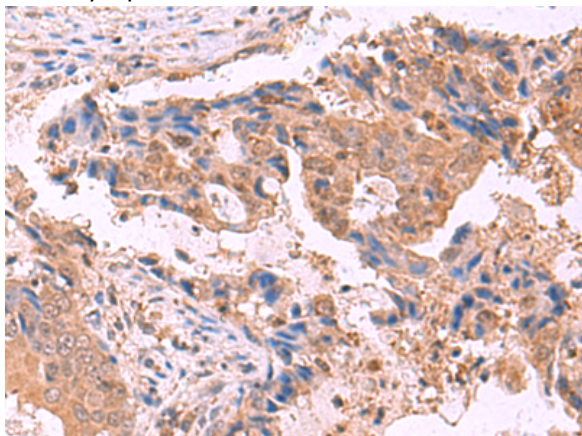
Storage & Shipping: Store at -20°C. Avoid repeated freezing and thawing



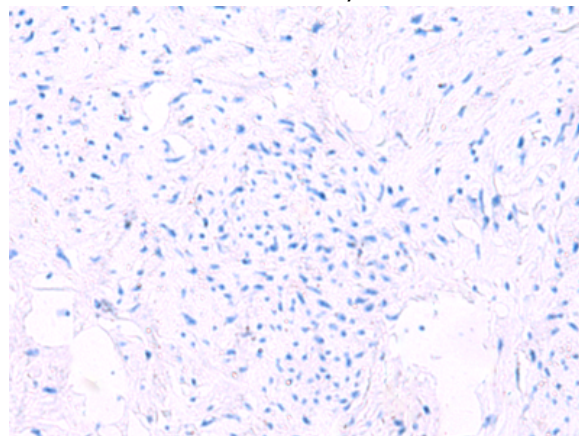
Immunohistochemistry analysis of paraffin embedded Human tonsil tissue using 219948(NCAN Antibody) at a dilution of 1/45(Cytoplasm).



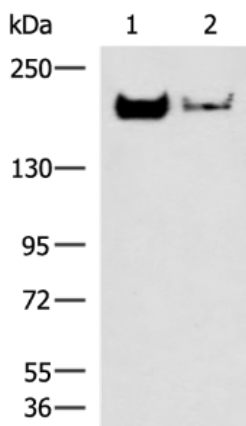
In comparison with the IHC on the left, the same paraffin-embedded Human tonsil tissue is first treated with the synthetic peptide and then with 219948(Anti-NCAN Antibody) at dilution 1/45.



The image on the left is immunohistochemistry of paraffin-embedded Human cervical cancer tissue using 219948(Anti-NCAN Antibody) at a dilution of 1/45.



In comparison with the IHC on the left, the same paraffin-embedded Human cervical cancer tissue is first treated with synthetic peptide and then with D260667(Anti-NCAN Antibody) at dilution 1/45.



Gel: 6%SDS-PAGE, Lysate: 40 µg;
Lane 1-2: Mouse brain tissue and Human cerebrum tissue lysates;
Primary antibody: 219948(NCAN Antibody) at dilution 1/1000;
Secondary antibody: HRP-conjugated Goat anti rabbit IgG at 1/5000 dilution;
Exposure time: 20 seconds



Product Description

Pioneering GTPase and Oncogene Product Development since 2010
