

## NCEH1 RABBIT PAB

**Cat.#:** S216894

**Product Name:** Anti-NCEH1 Rabbit Polyclonal Antibody

**Synonyms:** NCEH; AADAACL1

**UNIPROT ID:** Q6PIU2 (Gene Accession - BC028734 )

**Background:** Neutral cholesterol ester hydrolase 1 (NCEH) also known as arylacetamide deacetylase-like 1 (AADAACL1) or KIAA1363 is an enzyme that in humans is encoded by the NCEH1 gene. NCEH is an enzyme located in the endoplasmic reticulum. NCEH hydrolyzes 2-acetyl monoalkylglycerol ether, as part of an enzymatic pathway regulating the levels of platelet activating factor and lysophospholipids that may be involved in cancer development.

**Immunogen:** Fusion protein of human NCEH1

**Applications:** ELISA, WB, IHC

**Recommended Dilutions:** IHC: 100–300;WB: 1000–5000;ELISA: 2000–10000

**Host Species:** Rabbit

**Clonality:** Rabbit Polyclonal

**Isotype:** Immunogen-specific rabbit IgG

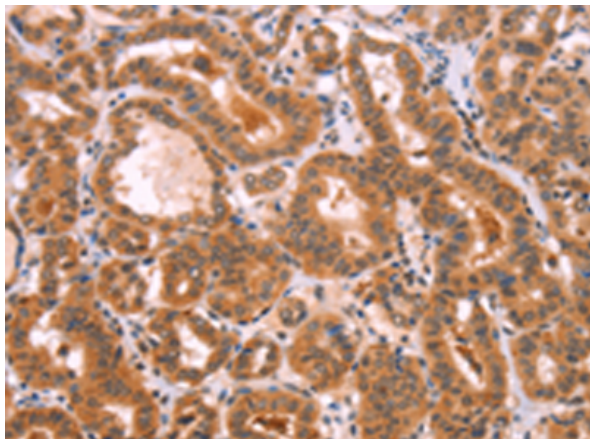
**Purification:** Antigen affinity purification

**Species Reactivity:** Human, Mouse, Rat

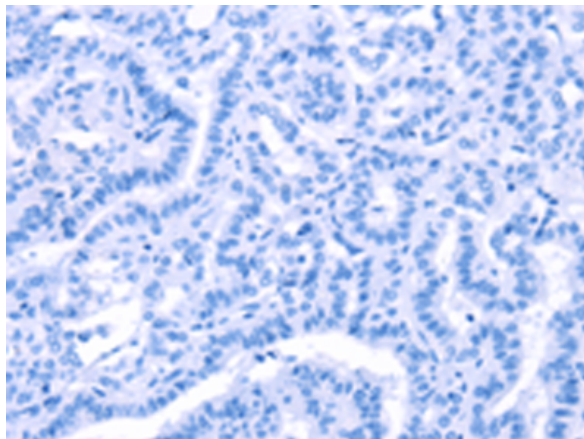
**Constituents:** PBS (without Mg<sup>2+</sup> and Ca<sup>2+</sup>), pH 7.4, 150 mM NaCl, 0.05% Sodium Azide and 40% glycerol

**Research Areas:** Metabolism, Signal Transduction, Cancer

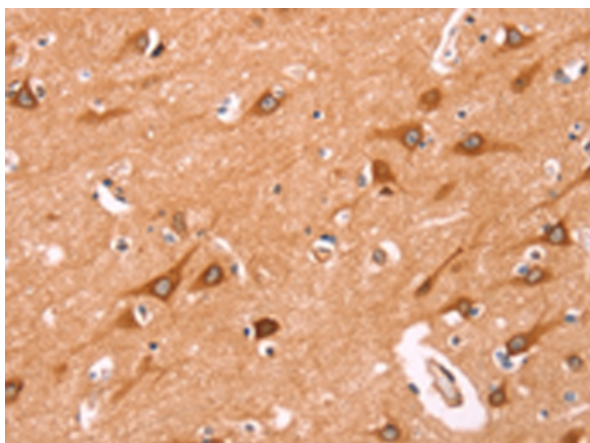
**Storage & Shipping:** Store at -20°C. Avoid repeated freezing and thawing



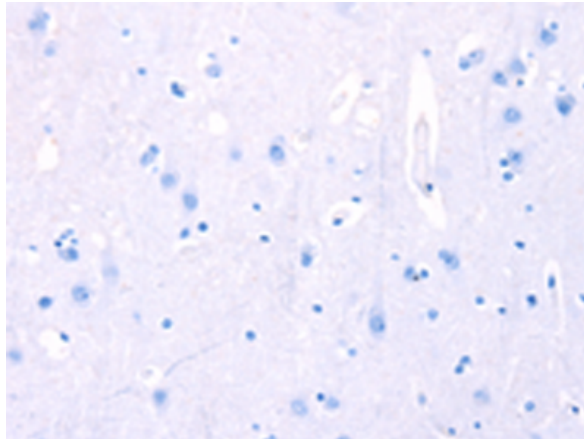
Immunohistochemistry analysis of paraffin embedded Human thyroid cancer tissue using 216894(NCEH1 Antibody) at a dilution of 1/80(Cytoplasm).



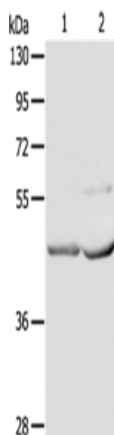
In comparison with the IHC on the left, the same paraffin-embedded Human thyroid cancer tissue is first treated with the fusion protein and then with 216894(Anti-NCEH1 Antibody) at dilution 1/80.



The image on the left is immunohistochemistry of paraffin-embedded Human brain tissue using 216894(Anti-NCEH1 Antibody) at a dilution of 1/80.



In comparison with the IHC on the left, the same paraffin-embedded Human brain tissue is first treated with fusion protein and then with D221432(Anti-NCEH1 Antibody) at dilution 1/80.



Gel: 10%SDS-PAGE, Lysate: 40 µg;  
 Lane 1-2: Mouse kidney tissue, Mouse heart tissue;  
 Primary antibody: 216894(NCEH1 Antibody) at dilution 1/1350;  
 Secondary antibody: Goat anti rabbit IgG at 1/8000 dilution;  
 Exposure time: 30 seconds



# Product Description

Pioneering GTPase and Oncogene Product Development since 2010

---