

## NCK1 RABBIT PAB

**Cat.#:** N225950

**Product Name:** Anti-NCK1 Rabbit pAb

**Synonyms:** NCK; nck-1; NCKalpha

**UNIPROT ID:** P16333

**Background:** Adapter protein which associates with tyrosine-phosphorylated growth factor receptors or their cellular substrates. Maintains low levels of EIF2S1 phosphorylation by promoting its dephosphorylation by PPI.

**Immunogen:** A synthesized peptide derived from human Nck

**Applications:** WB,IHC-P,ICC/IF,IP,FC

**Recommended Dilutions:** WB: 1/500-1/1000 IHC: 1/50-1/100 IF: 1/50-1/200 IP: 1/20 FC: 1/50-1/100

**Host Species:** Rabbit

**Clonality:** Rabbit Polyclonal

**Clone ID:** -

**MW:** Calculated MW: 43 kDa; Observed MW: 47 kDa

**Isotype:** IgG

**Purification:** Affinity Chromatography

**Species Reactivity:** Human,Mouse,Rat

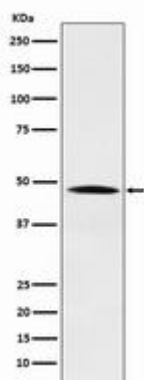
**Conjugation:** Unconjugated

**Modification:** Unmodified

**Constituents:** PBS (without Mg<sup>2+</sup> and Ca<sup>2+</sup>), pH 7.3 containing 50% glycerol, 0.5% BSA and 0.02% sodium azide

**Research Areas:** Signal Transduction

**Storage & Shipping:** Store at -20°C. Avoid repeated freezing and thawing



Western blot analysis of Nck in HeLa lysates using NCK1 antibody.



# Product Description

Pioneering GTPase and Oncogene Product Development since 2010

---