

NCKAP1 RABBIT PAB

Cat.#: S220734

Product Name: Anti-NCKAP1 Rabbit Polyclonal Antibody

Synonyms: HEM2; NAPI; NAPI25; p125Nap1

UNIPROT ID: Q9Y2A7 (Gene Accession - NP_038464)

Background: NAPI25, also known as NCKAP1 (NCK-associated protein 1), p125Nap1 or membrane-associated protein HEM-2, is a 1,128 amino acid single pass membrane protein that exists as two alternatively spliced isoforms and belongs to the HEM-1/HEM-2 family. While widely expressed, NAPI25 is found at highest levels in heart, brain and skeletal muscle where it regulates Rac-dependent actin remodeling as part of a lamellipodial complex with WAVE2, Abi-1 and CYFIP1. NAPI25 localizes to the cytoplasmic side of lamellipodium membrane and is encoded by a gene that maps to human chromosome 2q32.1 and mouse chromosome 2 C3. NAPI25 expression is markedly reduced in Alzheimer disease (AD)-affected brains, suggesting a possible role in the disease.

Immunogen: Synthetic peptide of human NCKAP1

Applications: ELISA, IHC

Recommended Dilutions: IHC: 25-100; ELISA: 1000-2000

Host Species: Rabbit

Clonality: Rabbit Polyclonal

Isotype: Immunogen-specific rabbit IgG

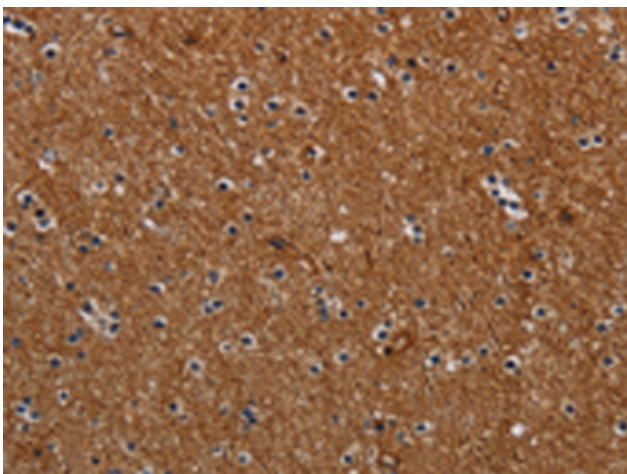
Purification: Antigen affinity purification

Species Reactivity: Human, Mouse, Rat

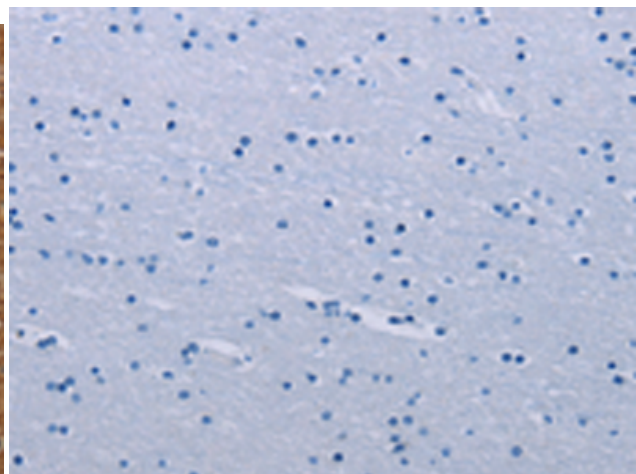
Constituents: PBS (without Mg²⁺ and Ca²⁺), pH 7.4, 150 mM NaCl, 0.05% Sodium Azide and 40% glycerol

Research Areas: Signal Transduction, Cancer, Neuroscience

Storage & Shipping: Store at -20°C. Avoid repeated freezing and thawing



Immunohistochemistry analysis of paraffin embedded Human brain tissue using 220734(NCKAP1 Antibody) at a dilution of 1/30(Cytoplasm).



In comparison with the IHC on the left, the same paraffin-embedded Human brain tissue is first treated with the synthetic peptide and then with 220734(Anti-NCKAP1 Antibody) at dilution 1/30.



Product Description

Pioneering GTPase and Oncogene Product Development since 2010
