

## NCL RABBIT PAB

**Cat.#:** S219483

**Product Name:** Anti-NCL Rabbit Polyclonal Antibody

**Synonyms:** C23; Nsr1

**UNIPROT ID:** P19338 (Gene Accession - BC002343 )

**Background:** Nucleolin (NCL), a eukaryotic nucleolar phosphoprotein, is involved in the synthesis and maturation of ribosomes. It is located mainly in dense fibrillar regions of the nucleolus. Human NCL gene consists of 14 exons with 13 introns and spans approximately 11kb. The intron 11 of the NCL gene encodes a small nucleolar RNA, termed U20.

**Immunogen:** Fusion protein of human NCL

**Applications:** ELISA, IHC

**Recommended Dilutions:** IHC: 100-300; ELISA: 5000-10000

**Host Species:** Rabbit

**Clonality:** Rabbit Polyclonal

**Isotype:** Immunogen-specific rabbit IgG

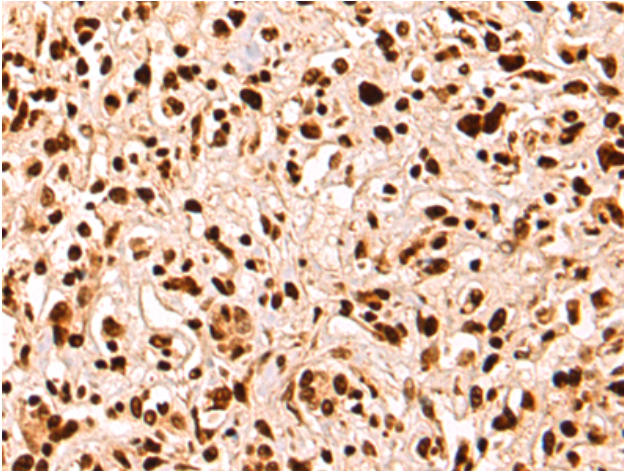
**Purification:** Antigen affinity purification

**Species Reactivity:** Human, Mouse, Rat

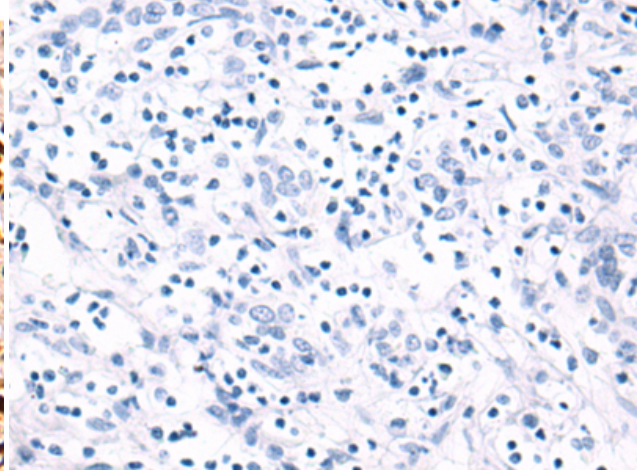
**Constituents:** PBS (without Mg<sup>2+</sup> and Ca<sup>2+</sup>), pH 7.4, 150 mM NaCl, 0.05% Sodium Azide and 40% glycerol

**Research Areas:** Epigenetics and Nuclear Signaling

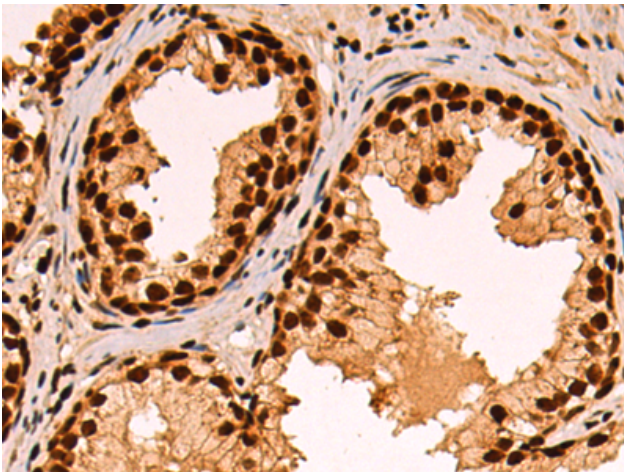
**Storage & Shipping:** Store at -20°C. Avoid repeated freezing and thawing



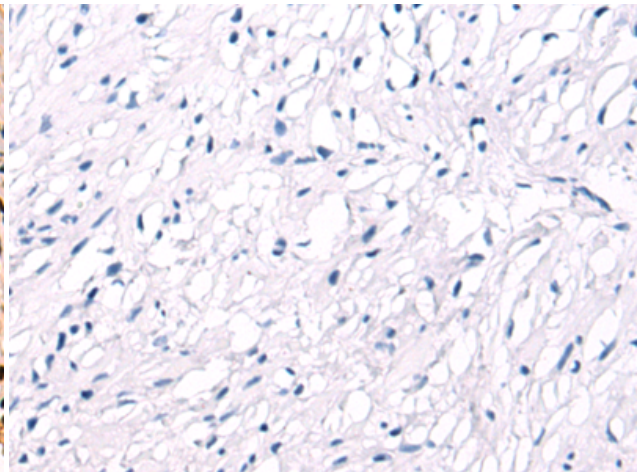
Immunohistochemistry analysis of paraffin embedded Human liver cancer tissue using 219483(NCL Antibody) at a dilution of 1/85(Nucleus).



In comparison with the IHC on the left, the same paraffin-embedded Human liver cancer tissue is first treated with the fusion protein and then with 219483(Anti-NCL Antibody) at dilution 1/85.



The image on the left is immunohistochemistry of paraffin-embedded Human prostate cancer tissue using 219483(Anti-NCL Antibody) at a dilution of 1/85.



In comparison with the IHC on the left, the same paraffin-embedded Human prostate cancer tissue is first treated with fusion protein and then with D227319(Anti-NCL Antibody) at dilution 1/85.