

NCLN RABBIT PAB

Cat.#: S218753

Product Name: Anti-NCLN Rabbit Polyclonal Antibody

Synonyms: NET59

UNIPROT ID: Q969V3 (Gene Accession - BC013283)

Background: May antagonize Nodal signaling and subsequent organization of axial structures during mesodermal patterning.

Immunogen: Fusion protein of human NCLN

Applications: ELISA, WB, IHC

Recommended Dilutions: IHC: 30-150;WB: 200-1000;ELISA: 5000-10000

Host Species: Rabbit

Clonality: Rabbit Polyclonal

Isotype: Immunogen-specific rabbit IgG

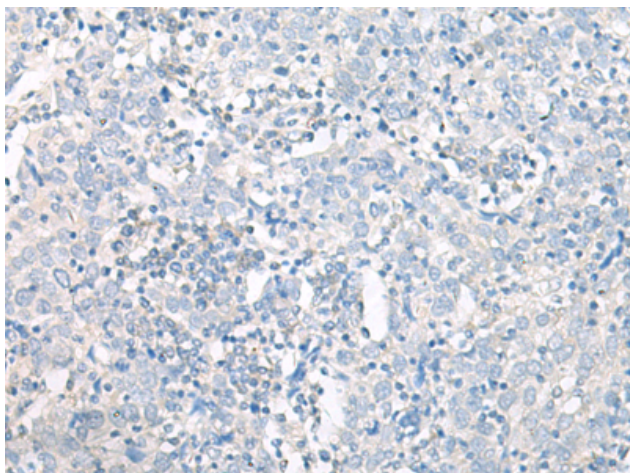
Purification: Antigen affinity purification

Species Reactivity: Human, Mouse, Rat

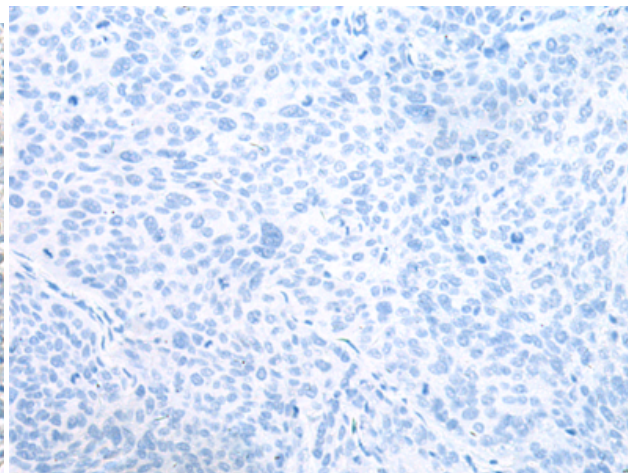
Constituents: PBS (without Mg²⁺ and Ca²⁺), pH 7.4, 150 mM NaCl, 0.05% Sodium Azide and 40% glycerol

Research Areas: Signal Transduction, Developmental Biology

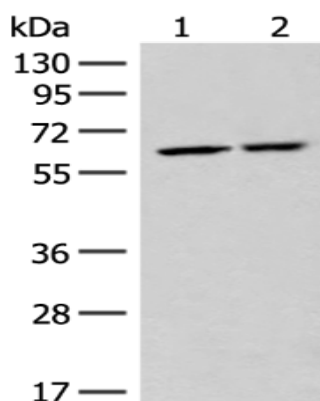
Storage & Shipping: Store at -20°C. Avoid repeated freezing and thawing



Immunohistochemistry analysis of paraffin embedded Human cervical cancer tissue using 218753 (NCLN Antibody) at a dilution of 1/20 (Cytoplasm).



In comparison with the IHC on the left, the same paraffin-embedded Human cervical cancer tissue is first treated with the fusion protein and then with 218753 (Anti-NCLN Antibody) at dilution 1/20.



Gel: 8% SDS-PAGE, Lysate: 40 μ g;
Lane 1-2: HeLa and A172 cell lysates;
Primary antibody: 218753 (NCLN Antibody) at dilution 1/300;
Secondary antibody: Goat anti rabbit IgG at 1/8000 dilution;
Exposure time: 30 seconds