

NCR1 RABBIT PAB

Cat.#: S220435

Product Name: Anti-NCR1 Rabbit Polyclonal Antibody

Synonyms: LY94; CD335; NKP46; NK-p46

UNIPROT ID: O76036 (Gene Accession - NP_001138929)

Background: Natural killer (NK) cells mediate MHC nonrestricted cytotoxicity. There are many candidate molecules for NK cell recognition structures, including inhibiting and activating receptors. Using a monoclonal antibody capable of triggering NK-mediated lysis, Sivori et al. (1997) identified a cell surface molecule of 46 kD that they termed p46. The molecule lacks N-linked sugars and is expressed on resting and activated NK cells but not on T cells or B cells. In addition to lytic activity, monoclonal antibody-mediated crosslinking induces intracellular calcium increases and cytokine production.

Immunogen: Synthetic peptide of human NCR1

Applications: ELISA, WB, IHC

Recommended Dilutions: IHC: 50-100;WB: 500-2000;ELISA: 5000-10000

Host Species: Rabbit

Clonality: Rabbit Polyclonal

Isotype: Immunogen-specific rabbit IgG

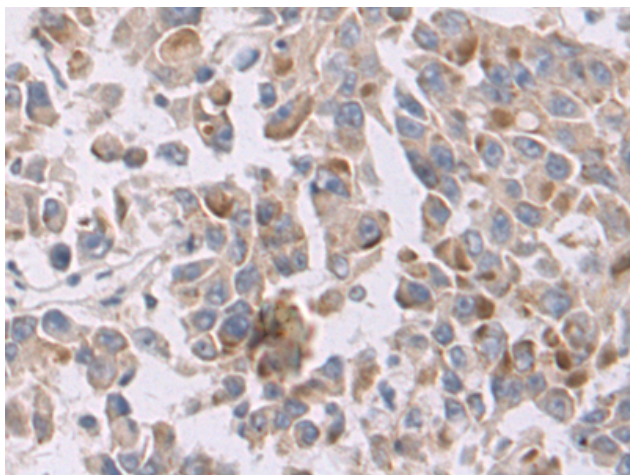
Purification: Antigen affinity purification

Species Reactivity: Human, Mouse

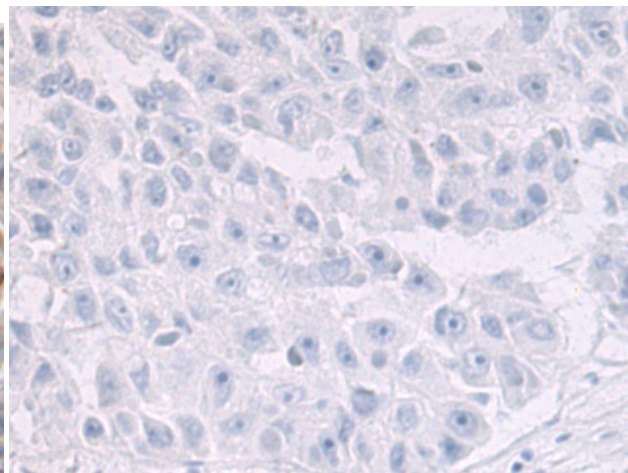
Constituents: PBS (without Mg²⁺ and Ca²⁺), pH 7.4, 150 mM NaCl, 0.05% Sodium Azide and 40% glycerol

Research Areas: Signal Transduction, Immunology

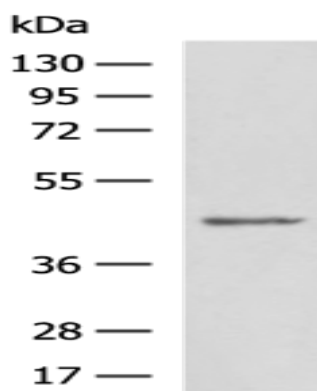
Storage & Shipping: Store at -20°C. Avoid repeated freezing and thawing



Immunohistochemistry analysis of paraffin embedded Human liver cancer tissue using 220435(NCR1 Antibody) at a dilution of 1/50(Cell membrane).



In comparison with the IHC on the left, the same paraffin-embedded Human liver cancer tissue is first treated with the synthetic peptide and then with 220435(Anti-NCR1 Antibody) at dilution 1/50.



Gel: 8%SDS-PAGE, Lysate: 40 μ g;
Lane: Mouse lung tissue lysate;
Primary antibody: 220435(NCR1 Antibody) at dilution 1/800;
Secondary antibody: HRP-conjugated Goat anti rabbit IgG at 1/5000 dilution;
Exposure time: 3 minutes