

## NDRG3 RABBIT PAB

**Cat.#:** S220135

**Product Name:** Anti-NDRG3 Rabbit Polyclonal Antibody

**Synonyms:**

**UNIPROT ID:** Q9UGV2 (Gene Accession - NP\_071922 )

**Background:** The N-myc downstream regulated gene (NDRG) family is comprised of four members, NDRG1 (also designated Drg1, RTP, rit42, Cap43 and Ndr1), NDRG2, NDRG3 and NDRG4, which share 57-65% homology. The gene encoding NDRG3 maps to human chromosome 20q11 and is predominantly expressed in testis, prostate and ovary, which suggests it may play a role in spermatogenesis.

**Immunogen:** Synthetic peptide of human NDRG3

**Applications:** ELISA, IHC

**Recommended Dilutions:** IHC: 50-200; ELISA: 2000-5000

**Host Species:** Rabbit

**Clonality:** Rabbit Polyclonal

**Isotype:** Immunogen-specific rabbit IgG

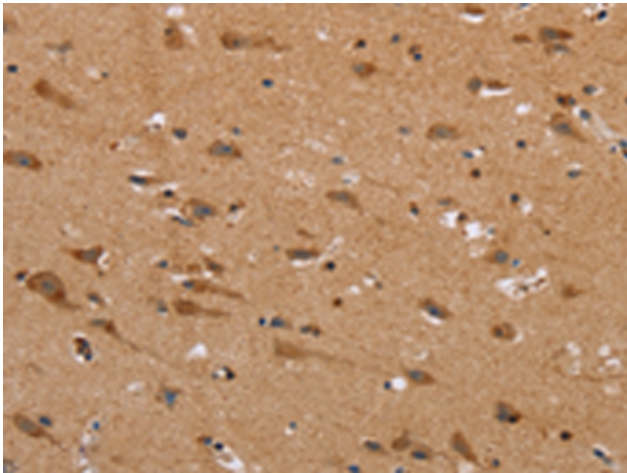
**Purification:** Antigen affinity purification

**Species Reactivity:** Human, Mouse, Rat

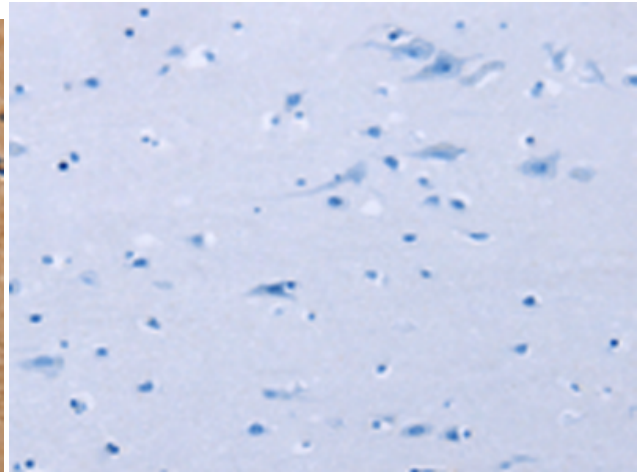
**Constituents:** PBS (without Mg<sup>2+</sup> and Ca<sup>2+</sup>), pH 7.4, 150 mM NaCl, 0.05% Sodium Azide and 40% glycerol

**Research Areas:** Cancer

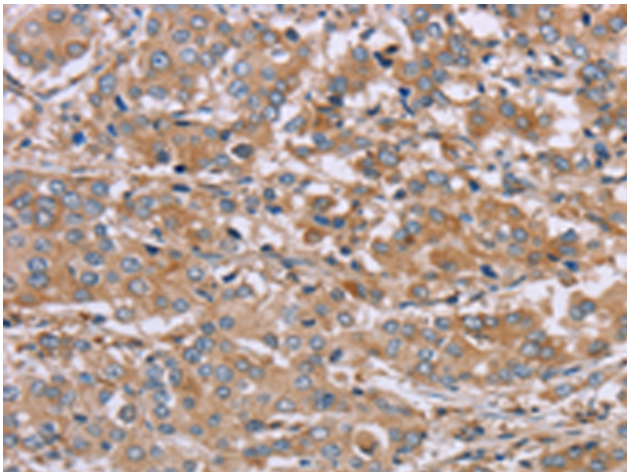
**Storage & Shipping:** Store at -20°C. Avoid repeated freezing and thawing



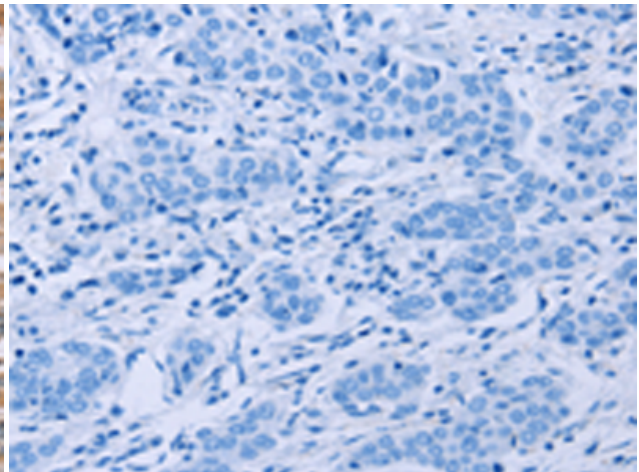
Immunohistochemistry analysis of paraffin embedded Human brain tissue using 220135(NDRG3 Antibody) at a dilution of 1/40(Cytoplasm).



In comparison with the IHC on the left, the same paraffin-embedded Human brain tissue is first treated with the synthetic peptide and then with 220135(Anti-NDRG3 Antibody) at dilution 1/40.



The image on the left is immunohistochemistry of paraffin-embedded Human liver cancer tissue using 220135(Anti-NDRG3 Antibody) at a dilution of 1/40.



In comparison with the IHC on the left, the same paraffin-embedded Human liver cancer tissue is first treated with synthetic peptide and then with D261015(Anti-NDRG3 Antibody) at dilution 1/40.