

NDUFA12 RABBIT PAB

Cat.#: S219742

Product Name: Anti-NDUFA12 Rabbit Polyclonal Antibody

Synonyms: B17.2, DAPI3

UNIPROT ID: Q9UI09 (Gene Accession - NP_061326)

Background: This gene encodes a protein which is part of mitochondrial complex 1, part of the oxidative phosphorylation system in mitochondria. Complex 1 transfers electrons to ubiquinone from NADH which establishes a proton gradient for the generation of ATP. Mutations in this gene are associated with Leigh syndrome due to mitochondrial complex 1 deficiency. Pseudogenes of this gene are located on chromosomes 5 and 13. Alternative splicing results in multiple transcript variants.

Immunogen: Synthetic peptide of human NDUFA12

Applications: ELISA, IHC

Recommended Dilutions: IHC: 50-200; ELISA: 1000-10000

Host Species: Rabbit

Clonality: Rabbit Polyclonal

Isotype: Immunogen-specific rabbit IgG

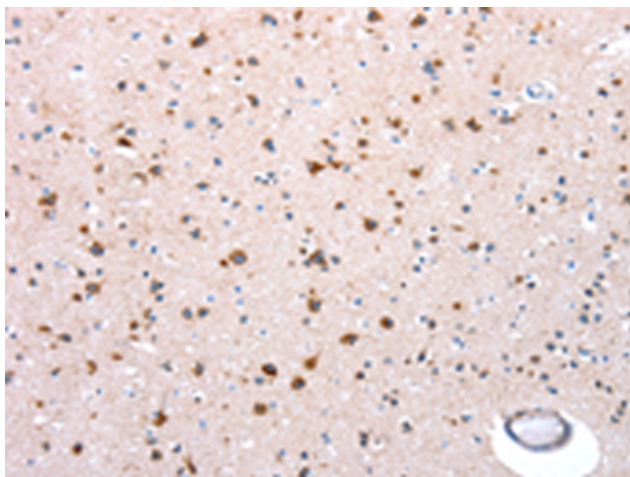
Purification: Antigen affinity purification

Species Reactivity: Human, Mouse

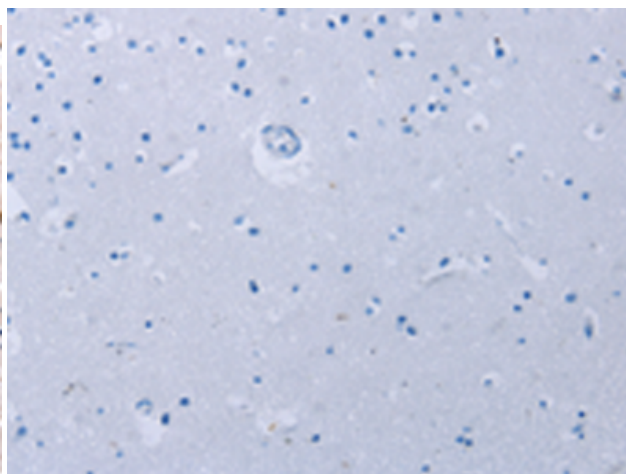
Constituents: PBS (without Mg²⁺ and Ca²⁺), pH 7.4, 150 mM NaCl, 0.05% Sodium Azide and 40% glycerol

Research Areas: Metabolism

Storage & Shipping: Store at -20°C. Avoid repeated freezing and thawing



Immunohistochemistry analysis of paraffin embedded Human brain tissue using 219742(NDUFA12 Antibody) at a dilution of 1/50(Cytoplasm).



In comparison with the IHC on the left, the same paraffin-embedded Human brain tissue is first treated with the synthetic peptide and then with 219742(Anti-NDUFA12 Antibody) at dilution 1/50.