

NDUFA4 RABBIT PAB

Cat.#: S220735

Product Name: Anti-NDUFA4 Rabbit Polyclonal Antibody

Synonyms: MLRQ; CI-9k; COXFA4; MISTR1; MRCAFI; CI-MLRQ; MC4DN21

UNIPROT ID: O00483 (Gene Accession - NP_002480)

Background: The protein encoded by this gene belongs to the complex I 9kDa subunit family. Mammalian complex I of mitochondrial respiratory chain is composed of 45 different subunits. This protein has NADH dehydrogenase activity and oxidoreductase activity. It transfers electrons from NADH to the respiratory chain. The immediate electron acceptor for the enzyme is believed to be ubiquinone.

Immunogen: Synthetic peptide of human NDUFA4

Applications: ELISA, WB, IHC

Recommended Dilutions: IHC: 50-200;WB: 1000-5000;ELISA: 5000-10000

Host Species: Rabbit

Clonality: Rabbit Polyclonal

Isotype: Immunogen-specific rabbit IgG

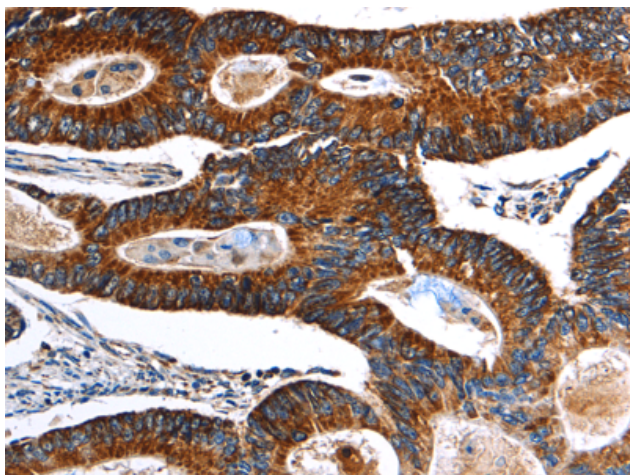
Purification: Antigen affinity purification

Species Reactivity: Human, Mouse

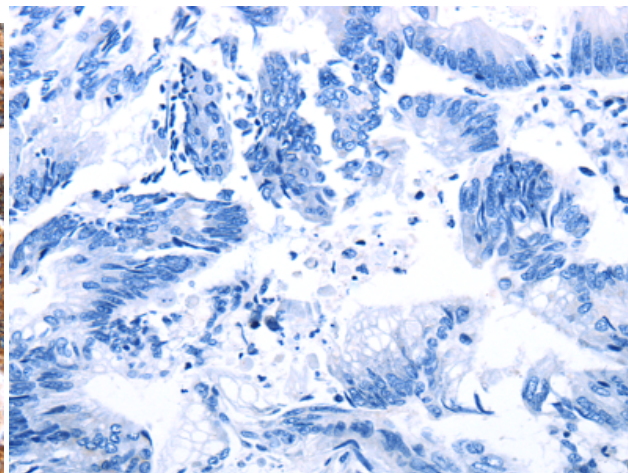
Constituents: PBS (without Mg²⁺ and Ca²⁺), pH 7.4, 150 mM NaCl, 0.05% Sodium Azide and 40% glycerol

Research Areas: Metabolism

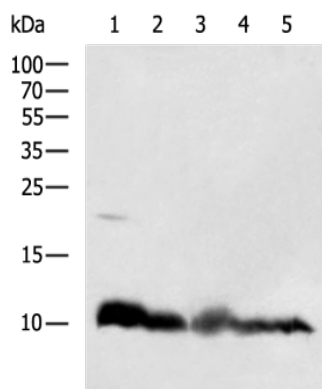
Storage & Shipping: Store at -20°C. Avoid repeated freezing and thawing



Immunohistochemistry analysis of paraffin embedded Human colon cancer tissue using 220735(NDUFA4 Antibody) at a dilution of 1/40(Cytoplasm).



In comparison with the IHC on the left, the same paraffin-embedded Human colon cancer tissue is first treated with the synthetic peptide and then with 220735(Anti-NDUFA4 Antibody) at dilution 1/40.



Gel: 12%SDS-PAGE, Lysate: 40 µg;
 Lane 1-5: SKOV3, HeLa, 293T, HepG2, Jurkat cell lysates;
 Primary antibody: 220735(NDUFA4 Antibody) at dilution 1/500;
 Secondary antibody: HRP-conjugated Goat anti rabbit IgG at 1/5000 dilution;
 Exposure time: 1 second