

## NDUFA9 RABBIT PAB

**Cat.#:** S217634

**Product Name:** Anti-NDUFA9 Rabbit Polyclonal Antibody

**Synonyms:** CC6; CI39k; COQ11; CI-39k; MC1DN26; NDUFS2L; SDR22E1

**UNIPROT ID:** Q16795 (Gene Accession - BC009311)

**Background:** The encoded protein is a subunit of the hydrophobic protein fraction of the NADH:ubiquinone oxidoreductase (complex I), the first enzyme complex in the electron transport chain located in the inner mitochondrial membrane. A pseudogene has been identified on chromosome 12. [provided by RefSeq, May 2010]

**Immunogen:** Fusion protein of human NDUFA9

**Applications:** ELISA, WB, IHC

**Recommended Dilutions:** IHC: 50-200;WB: 1000-5000;ELISA: 5000-10000

**Host Species:** Rabbit

**Clonality:** Rabbit Polyclonal

**Isotype:** Immunogen-specific rabbit IgG

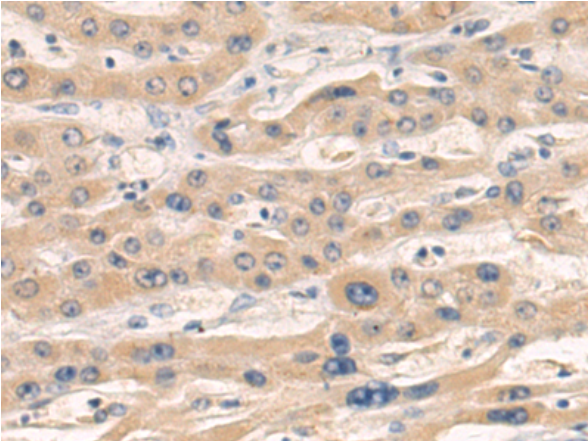
**Purification:** Antigen affinity purification

**Species Reactivity:** Human, Mouse

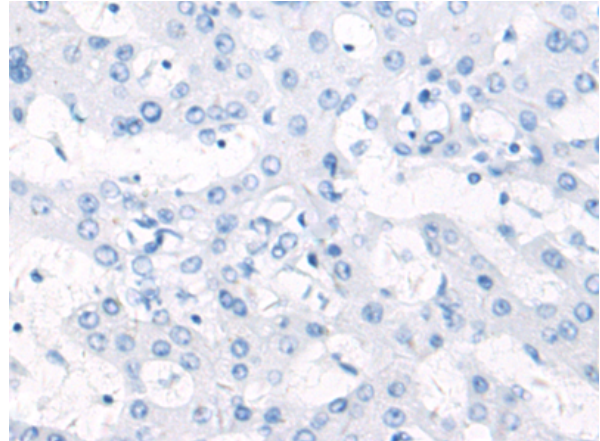
**Constituents:** PBS (without Mg<sup>2+</sup> and Ca<sup>2+</sup>), pH 7.4, 150 mM NaCl, 0.05% Sodium Azide and 40% glycerol

**Research Areas:** Metabolism, Cancer, Cell Biology

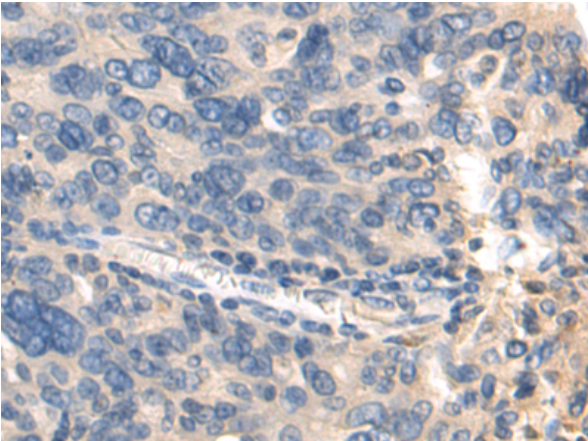
**Storage & Shipping:** Store at -20°C. Avoid repeated freezing and thawing



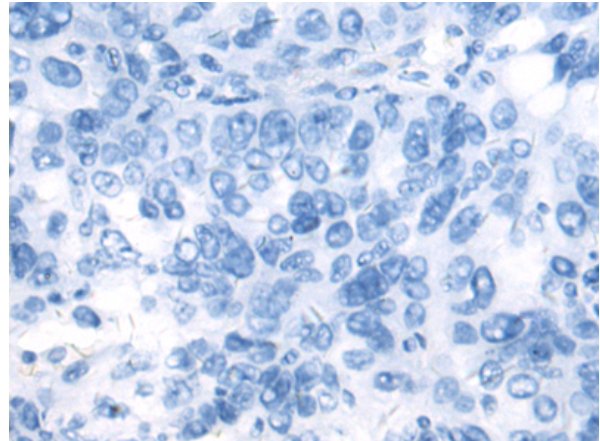
Immunohistochemistry analysis of paraffin embedded Human liver cancer tissue using 217634(NDUFA9 Antibody) at a dilution of 1/80(Cytoplasm).



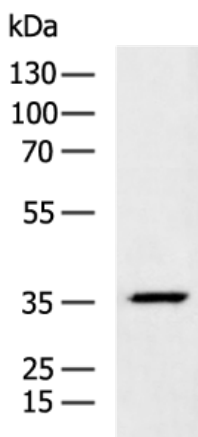
In comparison with the IHC on the left, the same paraffin-embedded Human liver cancer tissue is first treated with the fusion protein and then with 217634(Anti-NDUFA9 Antibody) at dilution 1/80.



The image on the left is immunohistochemistry of paraffin-embedded Human breast cancer tissue using 217634(Anti-NDUFA9 Antibody) at a dilution of 1/80.



In comparison with the IHC on the left, the same paraffin-embedded Human breast cancer tissue is first treated with fusion protein and then with D222741(Anti-NDUFA9 Antibody) at dilution 1/80.



Gel: 8%SDS-PAGE, Lysate: 40 µg;  
Lane: Mouse heart tissue lysate;  
Primary antibody: 217634(NDUFA9 Antibody) at dilution 1/1000;  
Secondary antibody: HRP-conjugated Goat anti rabbit IgG at 1/5000 dilution;  
Exposure time: 1 second



# Product Description

Pioneering GTPase and Oncogene Product Development since 2010

---