

## NDUFAB1 RABBIT PAB

**Cat.#:** S220737

**Product Name:** Anti-NDUFAB1 Rabbit Polyclonal Antibody

**Synonyms:** ACP; SDAP; FASN2A

**UNIPROT ID:** O14561 (Gene Accession - NP\_004994 )

**Background:** NDUFAB1 (NADH dehydrogenase (ubiquinone) 1, alpha/beta subcomplex 1), also known as SDAP, ACP (acyl carrier protein) or FASN2A, is one of about 45 subunits comprising Complex I of the oxidative phosphorylation electron transport chain. Consisting of 156 amino acids and localizing to mitochondria, NDUFAB1 functions as an accessory subunit of the multi-protein mitochondrial membrane respiratory chain NADH dehydrogenase complex (known as Complex I). Complex I plays an important role in the transfer of electrons from NADH to the respiratory chain, a process that is essential for cellular respiration. NDUFAB1 contains one acyl carrier domain and is encoded by a gene that maps to human chromosome 16p12.2 and mouse chromosome 7 F3.

**Immunogen:** Synthetic peptide of human NDUFAB1

**Applications:** ELISA, IHC

**Recommended Dilutions:** IHC: 50-200; ELISA: 2000-5000

**Host Species:** Rabbit

**Clonality:** Rabbit Polyclonal

**Isotype:** Immunogen-specific rabbit IgG

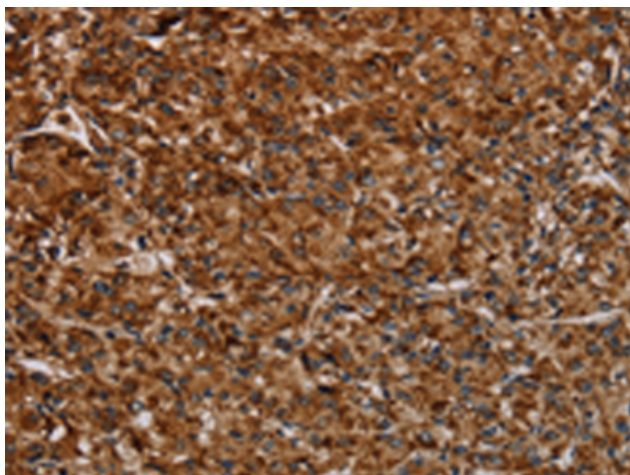
**Purification:** Antigen affinity purification

**Species Reactivity:** Human, Mouse

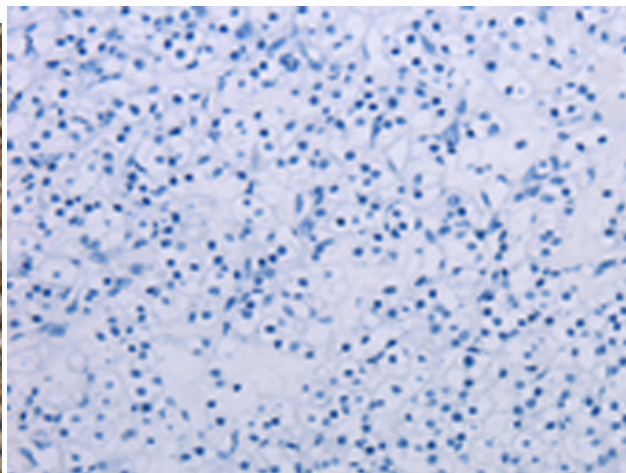
**Constituents:** PBS (without Mg<sup>2+</sup> and Ca<sup>2+</sup>), pH 7.4, 150 mM NaCl, 0.05% Sodium Azide and 40% glycerol

**Research Areas:** Metabolism, Cancer, Cardiovascular

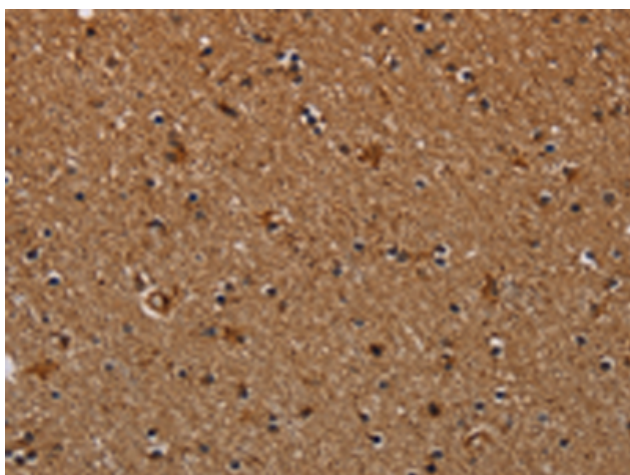
**Storage & Shipping:** Store at -20°C. Avoid repeated freezing and thawing



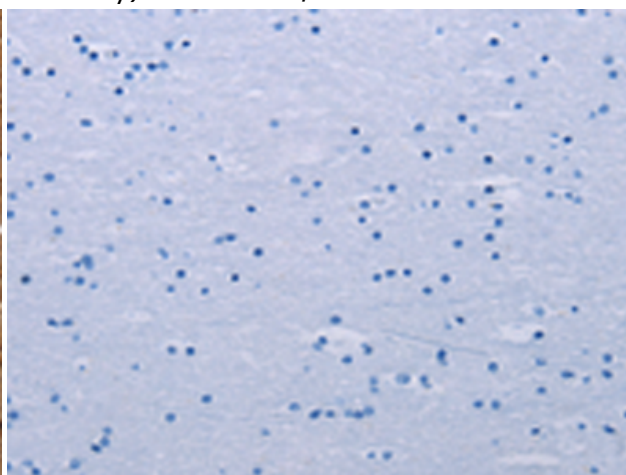
Immunohistochemistry analysis of paraffin embedded Human prostate cancer tissue using 220737(NDUFAB1 Antibody) at a dilution of 1/40(Cytoplasm and Nucleus).



In comparison with the IHC on the left, the same paraffin-embedded Human prostate cancer tissue is first treated with the synthetic peptide and then with 220737(Anti-NDUFAB1 Antibody) at dilution 1/40.



The image on the left is immunohistochemistry of paraffin-embedded Human brain tissue using 220737(Anti-NDUFAB1 Antibody) at a dilution of 1/40.



In comparison with the IHC on the left, the same paraffin-embedded Human brain tissue is first treated with synthetic peptide and then with D261942(Anti-NDUFAB1 Antibody) at dilution 1/40.