

NDUFAF1 RABBIT MAB

Cat.#: N262576

Product Name: Anti-NDUFAF1 Rabbit Monoclonal Antibody

Synonyms: CGI65; CIA30; Ndufaf1

UNIPROT ID: Q9Y375

Background: Chaperone protein involved in the assembly of the mitochondrial NADH:ubiquinone oxidoreductase complex (complex I).

Immunogen: A synthetic peptide of human NDUFAF1

Applications: WB, ICC/IF, IP

Recommended Dilutions: WB: 1/500-1/1000 IF: 1/50-1/200 IP: 1/20

Host Species: Rabbit

Clonality: Rabbit Monoclonal

Clone ID: R04-1D9

MW: Calculated MW: 38 kDa; Observed MW: 35 kDa

Isotype: IgG

Purification: Affinity Purified

Species Reactivity: Human

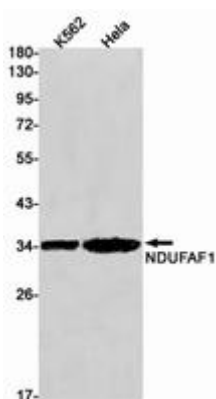
Conjugation: Unconjugated

Modification: Unmodified

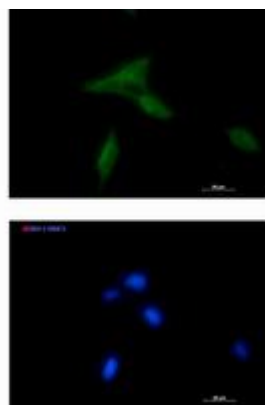
Constituents: PBS (without Mg²⁺ and Ca²⁺), pH 7.3 containing 50% glycerol, 0.5% BSA and 0.02% sodium azide

Research Areas: Signal Transduction

Storage & Shipping: Store at -20°C. Avoid repeated freezing and thawing



Western blot analysis of NDUFAF1 in K562, HeLa lysates using NDUFAF1 antibody.



Immunocytochemistry analysis of NDUFAF1 (green) in LNCap using NDUFAF1 antibody, and DAPI (blue).



Product Description

Pioneering GTPase and Oncogene Product Development since 2010
