

NDUFAF1 RABBIT MAB

Cat.#: N262575

Product Name: Anti-NDUFAF1 Rabbit Monoclonal Antibody

Synonyms: CGI65; CIA30; Ndufaf1

UNIPROT ID: Q9Y375

Background: Chaperone protein involved in the assembly of the mitochondrial NADH:ubiquinone oxidoreductase complex (complex I).

Immunogen: A synthetic peptide of human NDUFAF1

Applications: WB,IHC-F,IHC-P,ICC/IF,IP

Recommended Dilutions: WB: 1/500-1/1000 IHC: 1/50-1/100 IF: 1/50-1/200 IP: 1/20

Host Species: Rabbit

Clonality: Rabbit Monoclonal

Clone ID: R04-2J6

MW: Calculated MW: 38 kDa; Observed MW: 35 kDa

Isotype: IgG

Purification: Affinity Purified

Species Reactivity: Human,Mouse,Rat

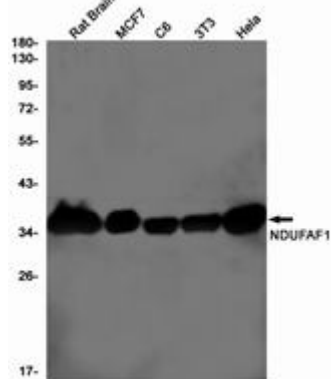
Conjugation: Unconjugated

Modification: Unmodified

Constituents: PBS (without Mg²⁺ and Ca²⁺), pH 7.3 containing 50% glycerol, 0.5% BSA and 0.02% sodium azide

Research Areas: Signal Transduction

Storage & Shipping: Store at -20°C. Avoid repeated freezing and thawing



Western blot analysis of NDUFAF1 in rat Brain, MCF-7, C6, 3T3, HeLa lysates using NDUFAF1 antibody.



Product Description

Pioneering GTPase and Oncogene Product Development since 2010
