

NDUFAF1 RABBIT PAB

Cat.#: S217632

Product Name: Anti-NDUFAF1 Rabbit Polyclonal Antibody

Synonyms: CGI65; CIA30; CGI-65

UNIPROT ID: Q9Y375 (Gene Accession - BC000780)

Background: This gene encodes a complex I assembly factor protein. Complex I (NADH-ubiquinone oxidoreductase) catalyzes the transfer of electrons from NADH to ubiquinone (coenzyme Q) in the first step of the mitochondrial respiratory chain, resulting in the translocation of protons across the inner mitochondrial membrane. The encoded protein is required for assembly of complex I, and mutations in this gene are a cause of mitochondrial complex I deficiency. Alternatively spliced transcript variants have been observed for this gene, and a pseudogene of this gene is located on the long arm of chromosome 19.

Immunogen: Fusion protein of human NDUFAF1

Applications: ELISA, IHC

Recommended Dilutions: IHC: 50-200; ELISA: 2000-5000

Host Species: Rabbit

Clonality: Rabbit Polyclonal

Isotype: Immunogen-specific rabbit IgG

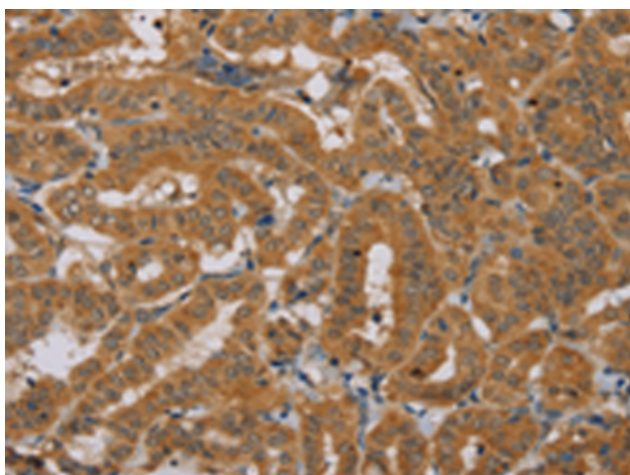
Purification: Antigen affinity purification

Species Reactivity: Human, Mouse

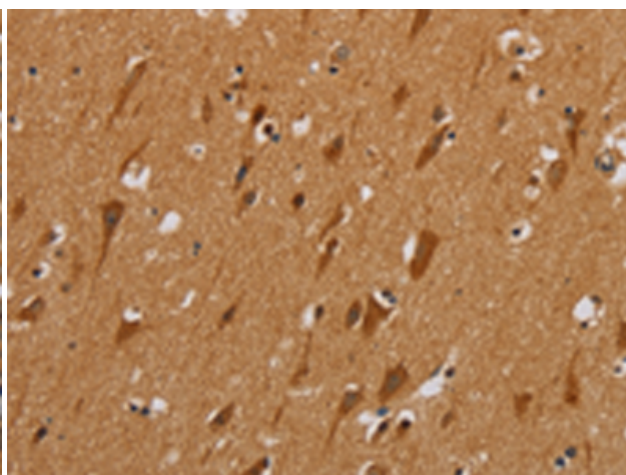
Constituents: PBS (without Mg²⁺ and Ca²⁺), pH 7.4, 150 mM NaCl, 0.05% Sodium Azide and 40% glycerol

Research Areas: Metabolism, Signal Transduction

Storage & Shipping: Store at -20°C. Avoid repeated freezing and thawing



Immunohistochemistry analysis of paraffin-embedded Human thyroid cancer tissue using 217632(NDUFAF1 Antibody) at a dilution of 1/25(Cytoplasm).



Immunohistochemistry analysis of paraffin-embedded Human brain tissue using 217632(Anti-NDUFAF1 Antibody) at a dilution of 1/25.