

NDUFB1 RABBIT MAB

Cat.#: N263123

Product Name: Anti-NDUFB1 Rabbit Monoclonal Antibody

Synonyms: MNLL; CI-MNLL; CI-SGDH

UNIPROT ID: O75438

Background: Accessory subunit of the mitochondrial membrane respiratory chain NADH dehydrogenase (Complex I) that is believed not to be involved in catalysis.

Immunogen: Recombinant protein of human NDUFB1

Applications: WB,IHC-P

Recommended Dilutions: WB: 1/500-1/1000 IHC: 1/50-1/100

Host Species: Rabbit

Clonality: Rabbit Monoclonal

Clone ID: R04-4H3

MW: Calculated MW: 7 kDa; Observed MW: 7 kDa

Isotype: IgG

Purification: Affinity Purified

Species Reactivity: Human

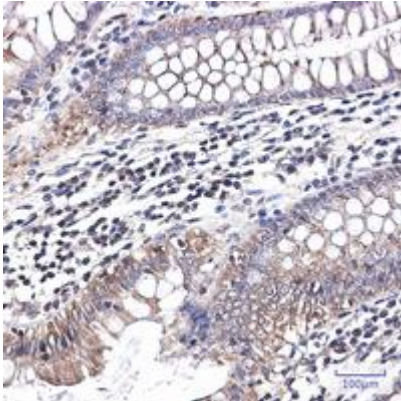
Conjugation: Unconjugated

Modification: Unmodified

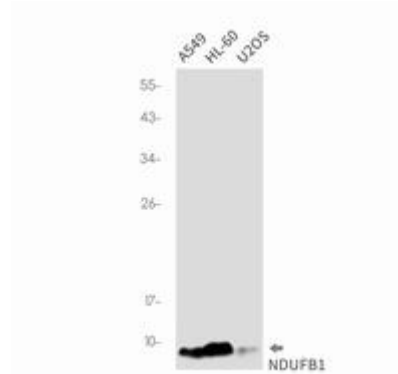
Constituents: PBS (without Mg²⁺ and Ca²⁺), pH 7.3 containing 50% glycerol, 0.5% BSA and 0.02% sodium azide

Research Areas: -

Storage & Shipping: Store at -20°C. Avoid repeated freezing and thawing



Immunohistochemistry analysis of paraffin-embedded Human colon cancer using NDUFB1 antibody. High-pressure and temperature Sodium Citrate pH 6.0 was used for antigen retrieval.



Western blot analysis of NDUFB1 in A549, HL-60, U2OS lysates using NDUFB1 antibody.