

## NDUFB11 RABBIT MAB

**Cat.#:** N262580

**Product Name:** Anti-NDUFB11 Rabbit Monoclonal Antibody

**Synonyms:** ESSS; Np15; P17.3; NP17.3; CI-ESSS; LSDMCA3

**UNIPROT ID:** Q9NX14

**Background:** Accessory subunit of the mitochondrial membrane respiratory chain NADH dehydrogenase (Complex I), that is believed not to be involved in catalysis. Complex I functions in the transfer of electrons from NADH to the respiratory chain. The immediate electron acceptor for the enzyme is believed to be ubiquinone.

**Immunogen:** Recombinant protein of human NDUFB11

**Applications:** WB,IHC-P

**Recommended Dilutions:** WB: 1/500-1/1000 IHC: 1/50-1/100

**Host Species:** Rabbit

**Clonality:** Rabbit Monoclonal

**Clone ID:** R08-7D9

**MW:** Calculated MW: 17 kDa; Observed MW: 17 kDa

**Isotype:** IgG

**Purification:** Affinity Purified

**Species Reactivity:** Human,Mouse,Rat

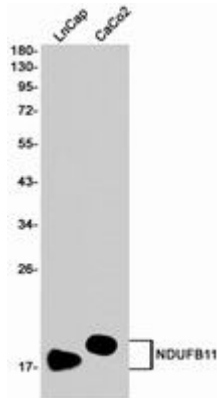
**Conjugation:** Unconjugated

**Modification:** Unmodified

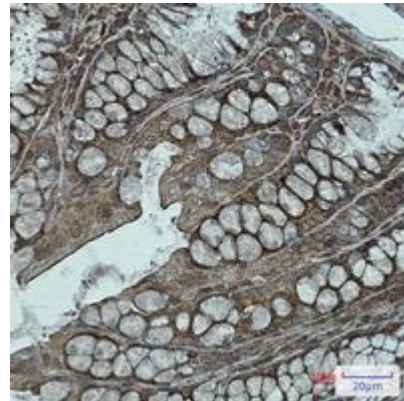
**Constituents:** PBS (without Mg<sup>2+</sup> and Ca<sup>2+</sup>), pH 7.3 containing 50% glycerol, 0.5% BSA and 0.02% sodium azide

**Research Areas:** Tags & Cell Markers

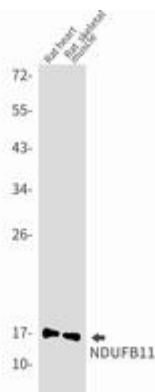
**Storage & Shipping:** Store at -20°C. Avoid repeated freezing and thawing



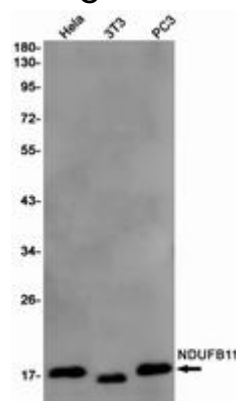
Western blot analysis of NDUFB11 in LnCap, CaCo2 lysates using NDUFB11 antibody



Immunohistochemistry analysis of paraffin-embedded mouse colon using NDUFB11 antibody. High-pressure and temperature Sodium Citrate pH 6.0 was used for antigen retrieval.



Western blot analysis of NDUFB11 in rat heart, rat skeletal muscle lysates using NDUFB11 antibody.



Western blot analysis of NDUFB11 in Hela, 3T3, PC-3 lysates using NDUFB11 antibody.