

NDUFS1 RABBIT MAB

Cat.#: N263444

Product Name: Anti-NDUFS1 Rabbit Monoclonal Antibody

Synonyms: NDUFS1; NADH-ubiquinone oxidoreductase 75 kDa subunit; mitochondrial; Complex I-75kD; CI-75kD

UNIPROT ID: P28331

Background: Core subunit of the mitochondrial membrane respiratory chain NADH dehydrogenase (Complex I) that is believed to belong to the minimal assembly required for catalysis. Complex I functions in the transfer of electrons from NADH to the respiratory chain.

Immunogen: A synthetic peptide of human Ndufs1

Applications: WB,IHC-F,IHC-P,ICC/IF,IP

Recommended Dilutions: WB: 1/500-1/1000 IHC: 1/50-1/100 IF: 1/50-1/200 IP: 1/20

Host Species: Rabbit

Clonality: Rabbit Monoclonal

Clone ID: R02-3I2

MW: Calculated MW: 79 kDa; Observed MW: 79 kDa

Isotype: IgG

Purification: Affinity Purified

Species Reactivity: Human,Mouse,Rat

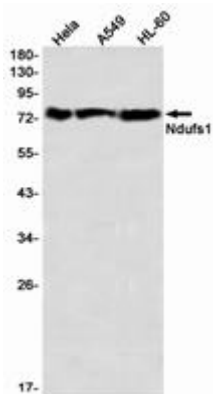
Conjugation: Unconjugated

Modification: Unmodified

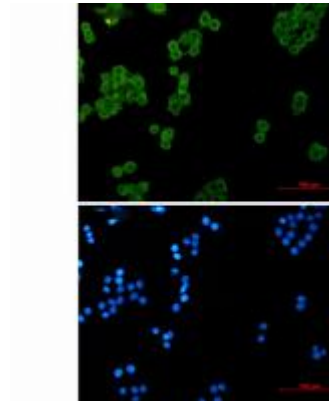
Constituents: PBS (without Mg²⁺ and Ca²⁺), pH 7.3 containing 50% glycerol, 0.5% BSA and 0.02% sodium azide

Research Areas: Tags & Cell Markers

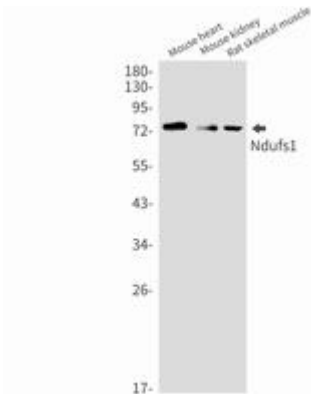
Storage & Shipping: Store at -20°C. Avoid repeated freezing and thawing



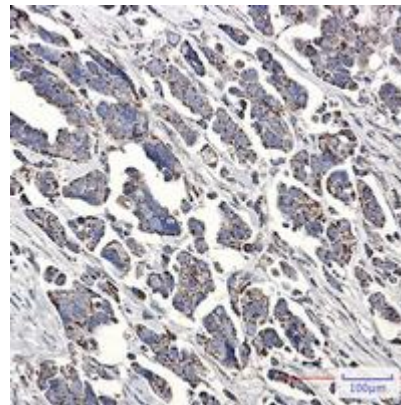
Western blot analysis of Ndufs1 in HeLa, A549, HL-60 lysates using Ndufs1 antibody



Immunocytochemistry analysis of NDUFS1 (green) in HeLa using NDUFS1 antibody, and DAPI (blue).



Western blot analysis of Ndufs1 in mouse heart, mouse kidney, rat skeletal muscle lysates using Ndufs1 antibody.



Immunohistochemistry analysis of paraffin-embedded Human Cholangiocarcinoma using Ndufs1 antibody. High-pressure and temperature Sodium Citrate pH 6.0 was used for antigen retrieval.