

## NECTIN4 RABBIT PAB

**Cat.#:** S217644

**Product Name:** Anti-NECTIN4 Rabbit Polyclonal Antibody

**Synonyms:** LNIR; PRR4; EDSS1; PVRL4; nectin-4

**UNIPROT ID:** Q96NY8 (Gene Accession - BC010423 )

**Background:** This gene encodes a member of the nectin family. The encoded protein contains two immunoglobulin-like (Ig-like) C2-type domains and one Ig-like V-type domain. It is involved in cell adhesion through trans-homophilic and -heterophilic interactions. It is a single-pass type I membrane protein. The soluble form is produced by proteolytic cleavage at the cell surface by the metalloproteinase ADAM17/TACE. The secreted form is found in both breast tumor cell lines and breast tumor patients. Mutations in this gene are the cause of ectodermal dysplasia-syndactyly syndrome type 1, an autosomal recessive disorder. Alternatively spliced transcript variants have been found but the full-length nature of the variant has not been determined.

**Immunogen:** Fusion protein of human NECTIN4

**Applications:** ELISA, WB, IHC

**Recommended Dilutions:** IHC: 50-200;WB: 500-2000;ELISA: 5000-10000

**Host Species:** Rabbit

**Clonality:** Rabbit Polyclonal

**Isotype:** Immunogen-specific rabbit IgG

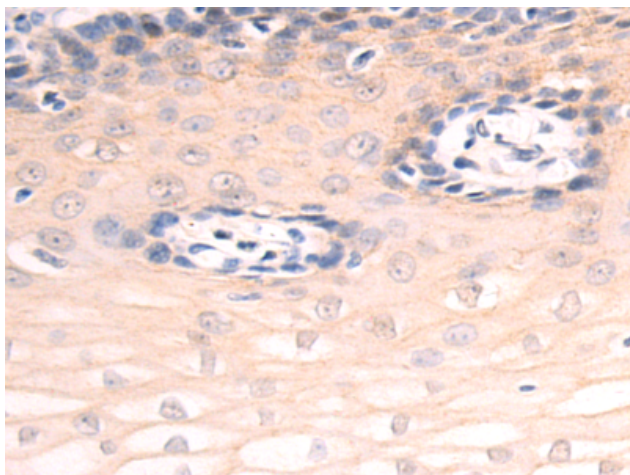
**Purification:** Antigen affinity purification

**Species Reactivity:** Human, Mouse

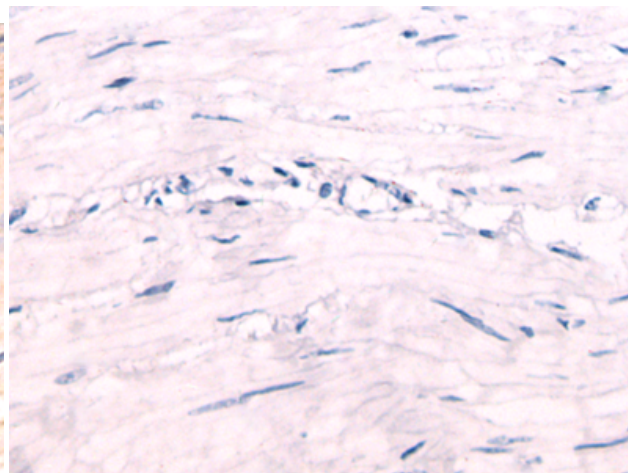
**Constituents:** PBS (without Mg<sup>2+</sup> and Ca<sup>2+</sup>), pH 7.4, 150 mM NaCl, 0.05% Sodium Azide and 40% glycerol

**Research Areas:** Cell Biology

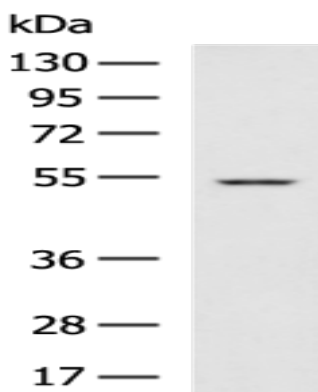
**Storage & Shipping:** Store at -20°C. Avoid repeated freezing and thawing



Immunohistochemistry analysis of paraffin embedded Human esophagus cancer tissue using 217644 (NECTIN4 Antibody) at a dilution of 1/60 (Secreted).



In comparison with the IHC on the left, the same paraffin-embedded Human esophagus cancer tissue is first treated with the fusion protein and then with 217644 (Anti-NECTIN4 Antibody) at dilution 1/60.



Gel: 8% SDS-PAGE, Lysate: 40  $\mu$ g;  
Lane: SKOV3 cell lysate;  
Primary antibody: 217644 (NECTIN4 Antibody) at dilution 1/550;  
Secondary antibody: HRP-conjugated Goat anti rabbit IgG at 1/5000 dilution;  
Exposure time: 30 seconds