

## NEDD8 RABBIT PAB

**Cat.#:** N225770

**Product Name:** Anti-NEDD8 Rabbit pAb

**Synonyms:** NEDD8; NEDD8; Neddylin; Neural precursor cell expressed developmentally down-regulated protein 8; NEDD-8; Ubiquitin-like protein Nedd8

**UNIPROT ID:** Q15843

**Background:** Neural precursor cell-expressed developmentally downregulated protein 8 (NEDD8), also known as Rub1 (related to ubiquitin 1) in plants and yeast, is a member of the ubiquitin-like protein family. The covalent attachment of NEDD8 to target proteins, termed neddylation, is a reversible, multi-step process analogous to ubiquitination.

**Immunogen:** A synthesized peptide derived from human NEDD8

**Applications:** WB,IHC-P,ICC/IF,IP

**Recommended Dilutions:** WB: 1/500-1/1000 IHC: 1/50-1/100 IF: 1/50-1/200 IP: 1/20

**Host Species:** Rabbit

**Clonality:** Rabbit Polyclonal

**Clone ID:** -

**MW:** Calculated MW: 9 kDa; Observed MW: 10,90 kDa

**Isotype:** IgG

**Purification:** Affinity Chromatography

**Species Reactivity:** Human,Mouse,Rat

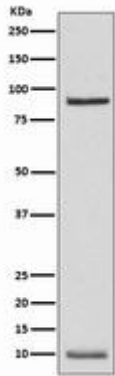
**Conjugation:** Unconjugated

**Modification:** Unmodified

**Constituents:** PBS (without Mg<sup>2+</sup> and Ca<sup>2+</sup>), pH 7.3 containing 50% glycerol, 0.5% BSA and 0.02% sodium azide

**Research Areas:** Cell Biology

**Storage & Shipping:** Store at -20°C. Avoid repeated freezing and thawing



Western blot analysis of NEDD8 in K562 lysates using NEDD8 antibody.