

NEK1 RABBIT PAB

Cat.#: S220335

Product Name: Anti-NEK1 Rabbit Polyclonal Antibody

Synonyms: SRPS2; SRPS2A; NY-REN-55

UNIPROT ID: Q96PY6 (Gene Accession - NP_001186326)

Background: The protein encoded by this gene is a serine/threonine kinase involved in cell cycle regulation. The encoded protein is found in a centrosomal complex with FEZ1, a neuronal protein that plays a role in axonal development. Defects in this gene are a cause of polycystic kidney disease (PKD). Several transcript variants encoding different isoforms have been found for this gene.

Immunogen: Synthetic peptide of human NEK1

Applications: ELISA, IHC

Recommended Dilutions: IHC: 25-100; ELISA: 2000-5000

Host Species: Rabbit

Clonality: Rabbit Polyclonal

Isotype: Immunogen-specific rabbit IgG

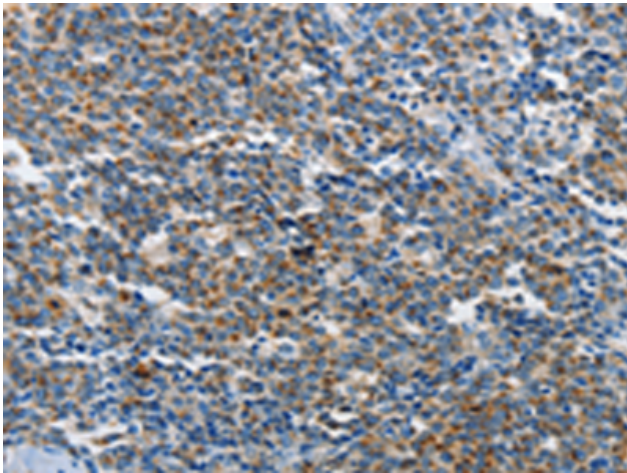
Purification: Antigen affinity purification

Species Reactivity: Human, Mouse

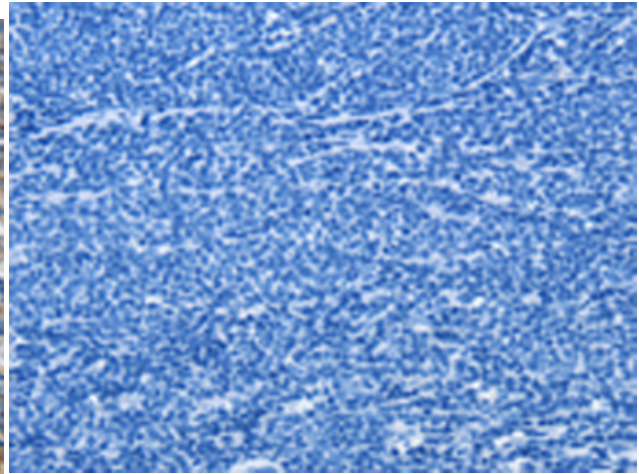
Constituents: PBS (without Mg²⁺ and Ca²⁺), pH 7.4, 150 mM NaCl, 0.05% Sodium Azide and 40% glycerol

Research Areas: Signal Transduction, Epigenetics and Nuclear Signaling, Cancer

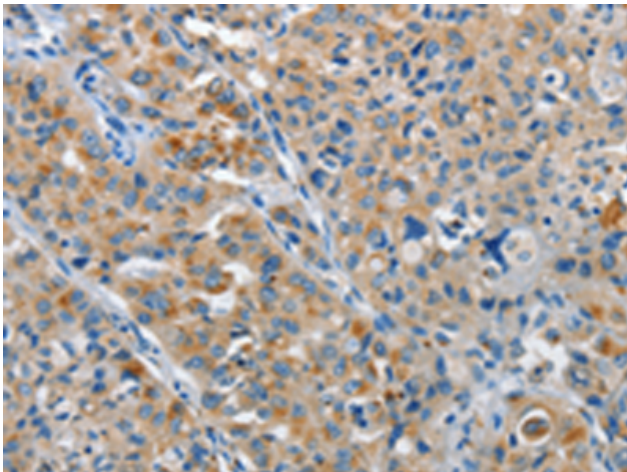
Storage & Shipping: Store at -20°C. Avoid repeated freezing and thawing



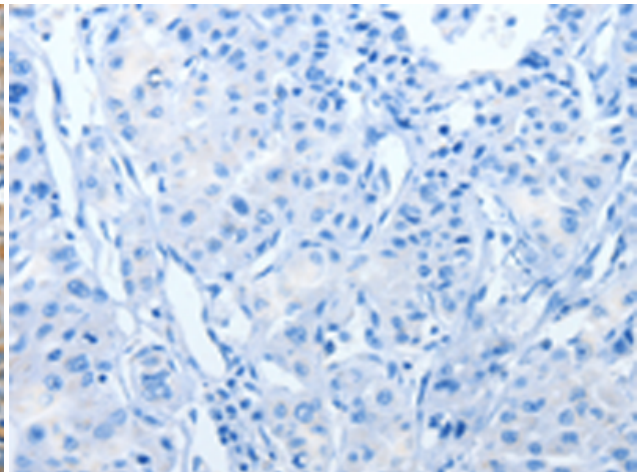
Immunohistochemistry analysis of paraffin embedded Human lymphoma tissue using 220335 (NEK1 Antibody) at a dilution of 1/25 (Cytoplasm).



In comparison with the IHC on the left, the same paraffin-embedded Human lymphoma tissue is first treated with the synthetic peptide and then with 220335 (Anti-NEK1 Antibody) at dilution 1/25.



The image on the left is immunohistochemistry of paraffin-embedded Human lung cancer tissue using 220335 (Anti-NEK1 Antibody) at a dilution of 1/25.



In comparison with the IHC on the left, the same paraffin-embedded Human lung cancer tissue is first treated with synthetic peptide and then with D261377 (Anti-NEK1 Antibody) at dilution 1/25.