

NEK10 RABBIT PAB

Cat.#: S214123

Product Name: Anti-NEK10 Rabbit Polyclonal Antibody

Synonyms:

UNIPROT ID: Q6ZWH5 (Gene Accession - NP_955379)

Background: Nek10 (NIMA (never in mitosis gene a)-related kinase 10) is a 712 amino acid protein belonging to the NIMA subfamily of kinases and functions as a magnesium-dependent serine/threonine protein kinase. Kinases of the NIMA subfamily are typically involved in genotoxic stress response and DNA replication. Nek10 is expressed in brain and may contain a 14-3-3 interaction motif in its C-terminus. The gene encoding Nek10 has been localized to a region on chromosome 3 that may contribute to vulnerability to addictions. Due to alternative splicing events, three isoforms exist for Nek10.

Immunogen: Synthetic peptide of human NEK10

Applications: ELISA, IHC

Recommended Dilutions: IHC: 25-100; ELISA: 2000-5000

Host Species: Rabbit

Clonality: Rabbit Polyclonal

Isotype: Immunogen-specific rabbit IgG

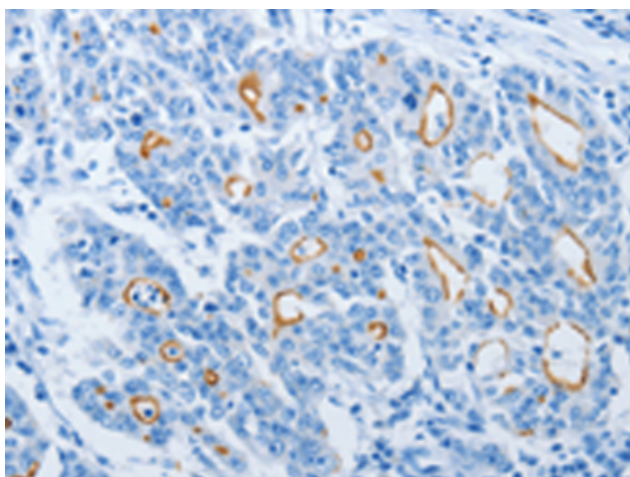
Purification: Antigen affinity purification

Species Reactivity: Human

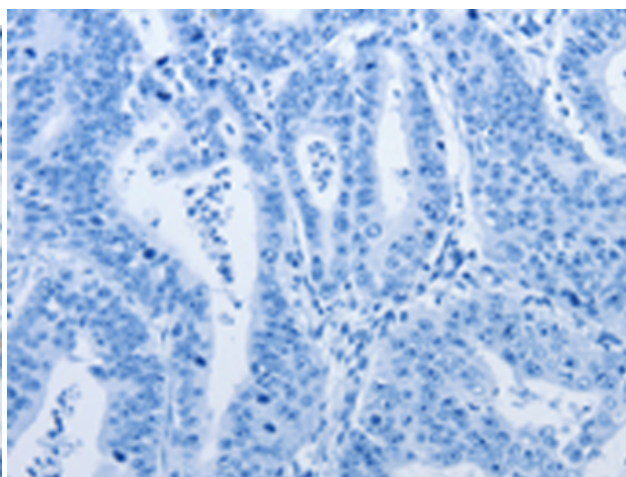
Constituents: PBS (without Mg²⁺ and Ca²⁺), pH 7.4, 150 mM NaCl, 0.05% Sodium Azide and 40% glycerol

Research Areas: Signal Transduction

Storage & Shipping: Store at -20°C. Avoid repeated freezing and thawing



Immunohistochemistry analysis of paraffin embedded Human gastric cancer tissue using 214123(NEK10 Antibody) at a dilution of 1/20(Luminal membranous).



In comparison with the IHC on the left, the same paraffin-embedded Human gastric cancer tissue is first treated with the synthetic peptide and then with 214123(Anti-NEK10 Antibody) at dilution 1/20.