

NEK5 RABBIT PAB

Cat.#: S220337

Product Name: Anti-NEK5 Rabbit Polyclonal Antibody

Synonyms:

UNIPROT ID: Q6P3R8 (Gene Accession - NP_954983)

Background: Nek5 (NimA-related protein kinase 5) is a 708 amino acid protein that is related to NIMA, a protein that was originally discovered in *Aspergillus nidulans* and is necessary for entry into mitosis. One of several members of the Set/Thr protein kinase super family, Nek5 contains one protein kinase domain through which it catalyzes the ATP-dependent phosphorylation of target proteins. Like NIMA, Nek5 may be involved in mitotic regulation and cell cycle control.

Immunogen: Synthetic peptide of human NEK5

Applications: ELISA, IHC

Recommended Dilutions: IHC: 25-100; ELISA: 2000-5000

Host Species: Rabbit

Clonality: Rabbit Polyclonal

Isotype: Immunogen-specific rabbit IgG

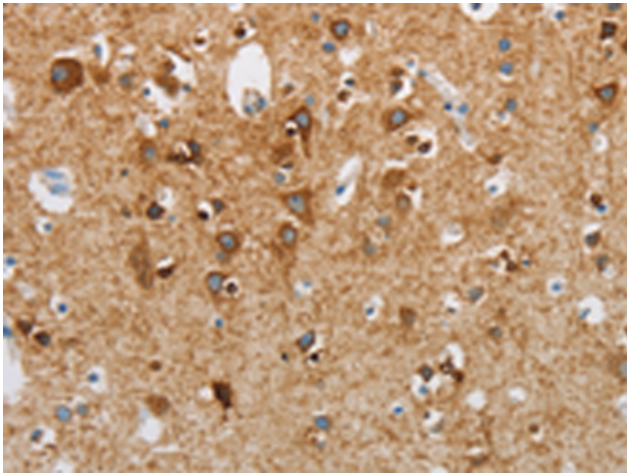
Purification: Antigen affinity purification

Species Reactivity: Human

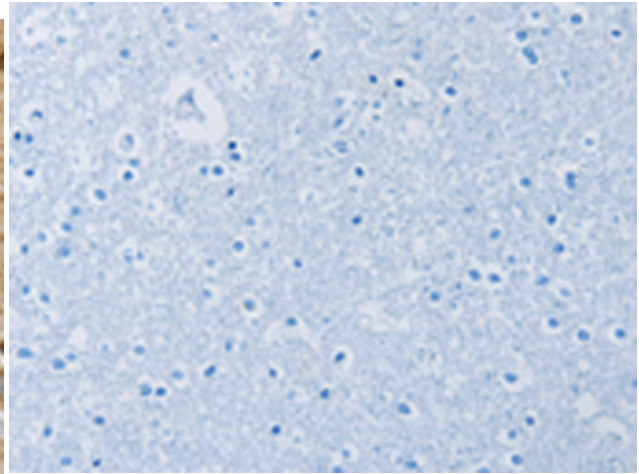
Constituents: PBS (without Mg²⁺ and Ca²⁺), pH 7.4, 150 mM NaCl, 0.05% Sodium Azide and 40% glycerol

Research Areas: Signal Transduction

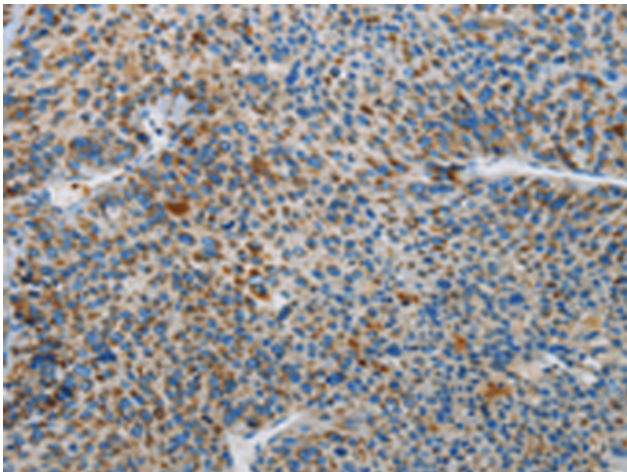
Storage & Shipping: Store at -20°C. Avoid repeated freezing and thawing



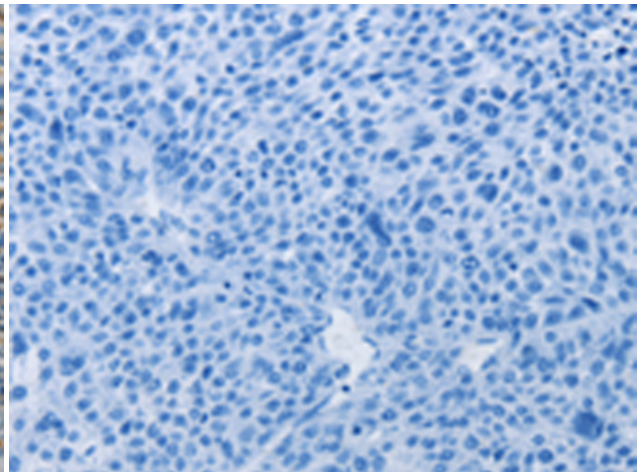
Immunohistochemistry analysis of paraffin embedded Human brain tissue using 220337(NEK5 Antibody) at a dilution of 1/25(Cytoplasm).



In comparison with the IHC on the left, the same paraffin-embedded Human brain tissue is first treated with the synthetic peptide and then with 220337(Anti-NEK5 Antibody) at dilution 1/25.



The image on the left is immunohistochemistry of paraffin-embedded Human liver cancer tissue using 220337(Anti-NEK5 Antibody) at a dilution of 1/25.



In comparison with the IHC on the left, the same paraffin-embedded Human liver cancer tissue is first treated with synthetic peptide and then with D261379(Anti-NEK5 Antibody) at dilution 1/25.